

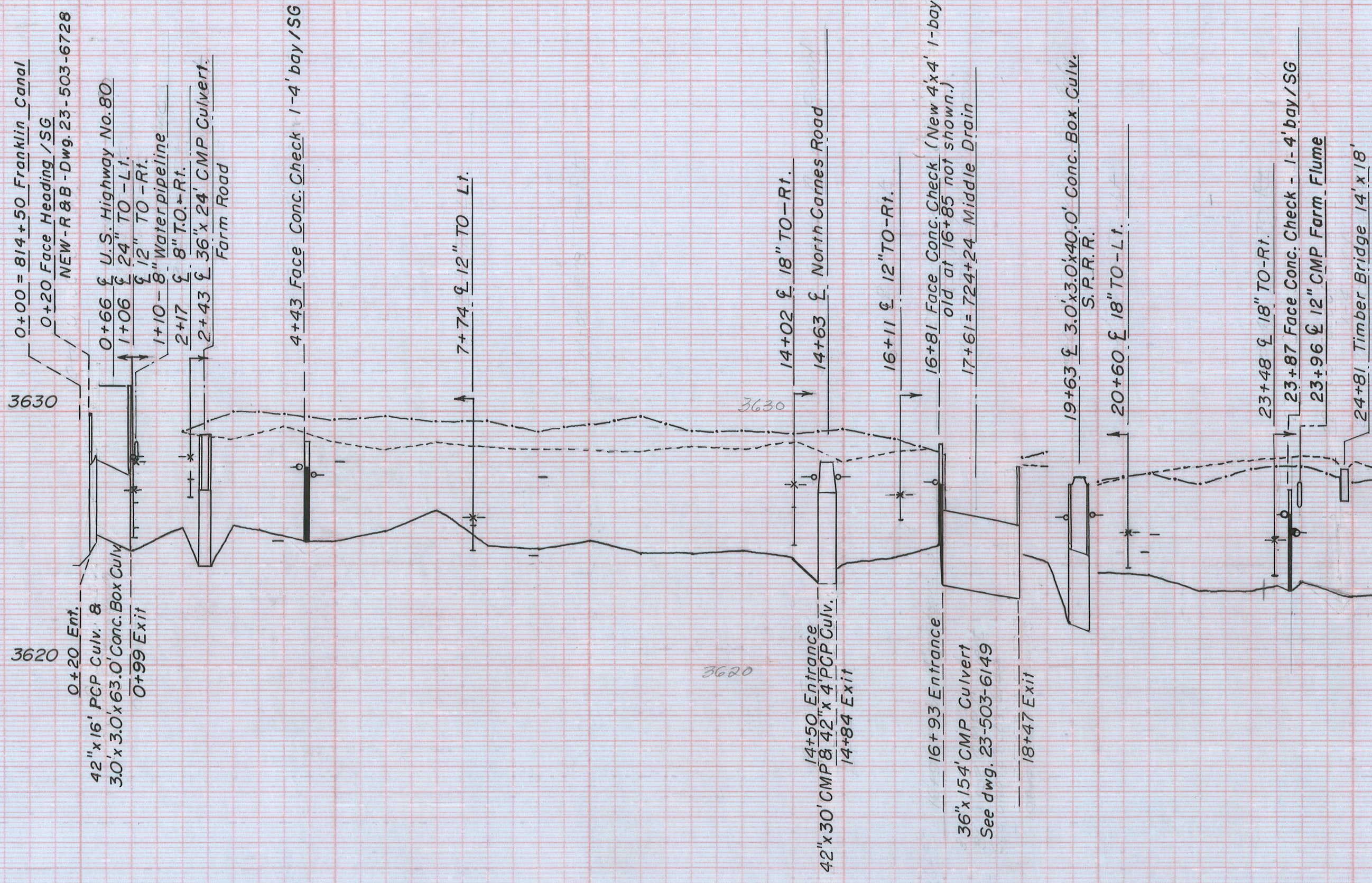
th headwall of 3.0' x 3.0' concrete box  
Sta. 0+30.

D  
k  
ace  
nd of Turnout  
f Lateral  
Surface Left and Right

# LATERAL

1960  
July 1960.  
2, Ysleta.  
R. J. Jan. 31, 1961.

23-503-6257.



0+00 = 814 + 50 Franklin Canal  
0+20 Face Heading / SG  
NEW - R & B - Dwg. 23-503-6728

3630

0+20 Ent.  
42" x 16' PCP Culv. &  
3.0' x 3.0' x 63.0' Conc. Box Culv.  
0+99 Exit

3620

0+66 U.S. Highway No. 80  
1+06 24" TO - Lt.  
1+10 12" TO - Rt.  
2+17 8" TO - Rt.  
2+43 36" x 24' CMP Culvert.  
Farm Road

4+43 Face Conc. Check 1-4' bay / SG

7+74 12" TO Lt.

3620

14+50 Entrance  
42" x 30' CMP & 42" x 4' PCP Culv.  
14+84 Exit

14+02 18" TO - Rt.  
14+63 North Carnes Road

16+11 12" TO - Rt.

16+93 Entrance  
36" x 154' CMP Culvert  
See dwg. 23-503-6149

16+81 Face Conc. Check (New 4x4' 1-bay replacing  
old at 16+85 not shown.)  
17+61 = 724+24 Middle Drain

18+47 Exit

19+63 3.0' x 3.0' x 40.0' Conc. Box Culv.  
S.P.R.R.

20+60 18" TO - Lt.

23+48 18" TO - Rt.  
23+87 Face Conc. Check - 1-4' bay / SG  
23+96 12" CMP Farm Flume

24+81 Timber Bridge 14' x 18'