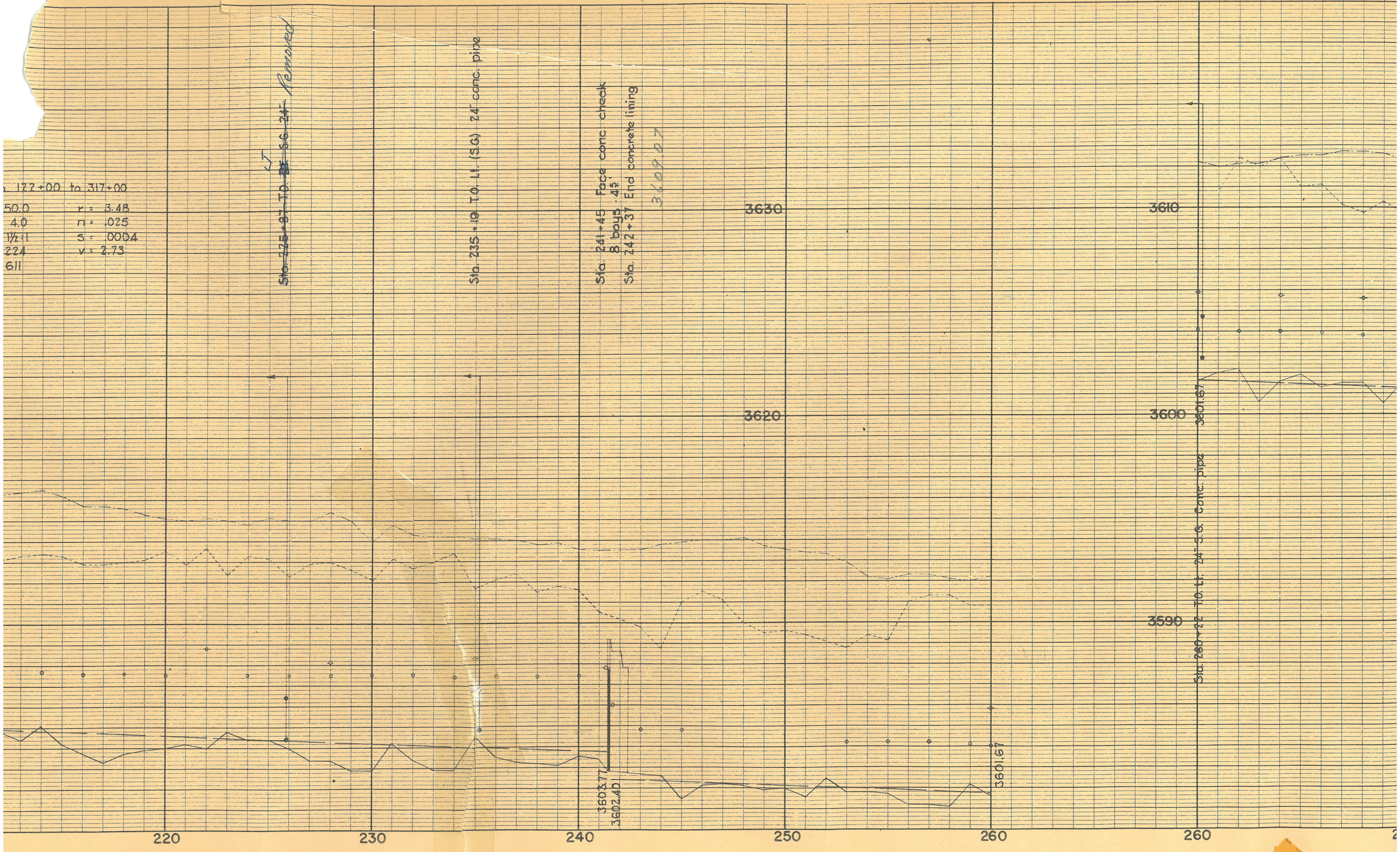


172+00 to 317+00
 50.0 r = 3.48
 4.0 n = .025
 1 1/2" s = .0004
 224 v = 2.73
 611

Sta. 225+97 TO ~~24~~ 56-24' ~~Removed~~

Sta. 235+19 TO LI. (S.G.) 24' conc. pipe

Sta. 241+45 Face conc. check
 8 bays .45
 Sta. 242+37 End concrete lining
 3609.07



220

230

240

250

260

260

3630

3620

3610

3600

3590

3603.71
 3602.40

3601.67

3601.67

Sta. 260+22 TO LI. 24' S.G. conc. pipe