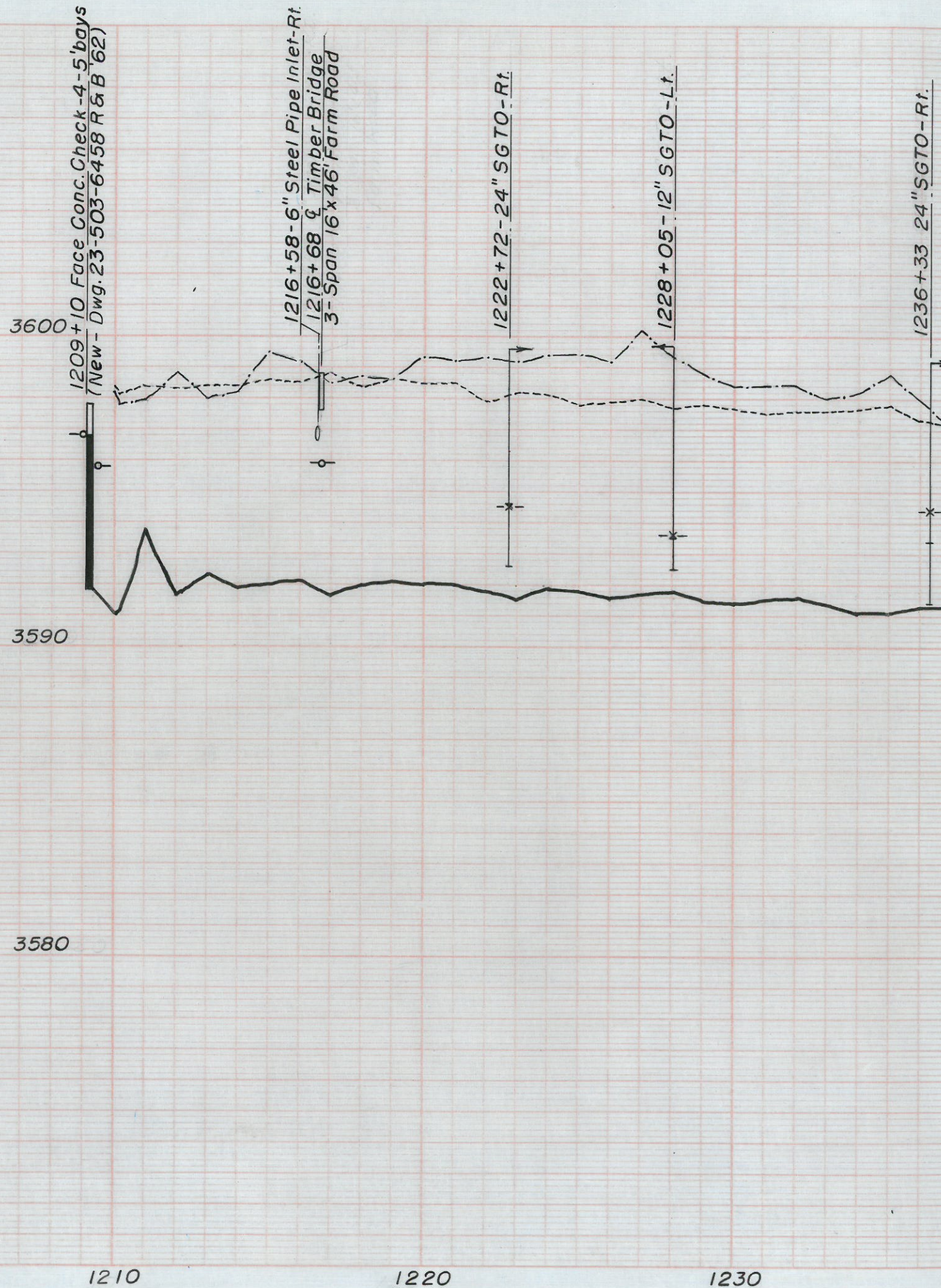


B.M. Elev. 3598.62 Brass cap top lt. cor. of upstream bridge abutment  
sta. 1216+68 Franklin Canal.

LEGEND

- - - Top of right bank
- - - Top of left bank
- - - Top of concrete lining-right bank
- - - Top of concrete lining-left bank
- o- High water in canal
- x- High water-turnout exit
- Bottom of canal.



UNITED STATES  
DEPARTMENT OF THE INTERIOR  
BUREAU OF RECLAMATION  
RIO GRANDE PROJECT-NEW MEXICO-TEXAS

**FRANKLIN CANAL**

STA. 1209+10 to END  
CONDITION PROFILE 1961-1962

SURVEYED BY - Taylor Sept., 1961.

SURVEYED BY - BREITEN Jan., 1962.

PLOTTED BY E.R.J. - F.B. 3181, 3183, 3185 Ysleta.

CHECKED BY - R.C.

23-503-6552.

Revised March 1963-R.C. -  
to show R.&B. structures.