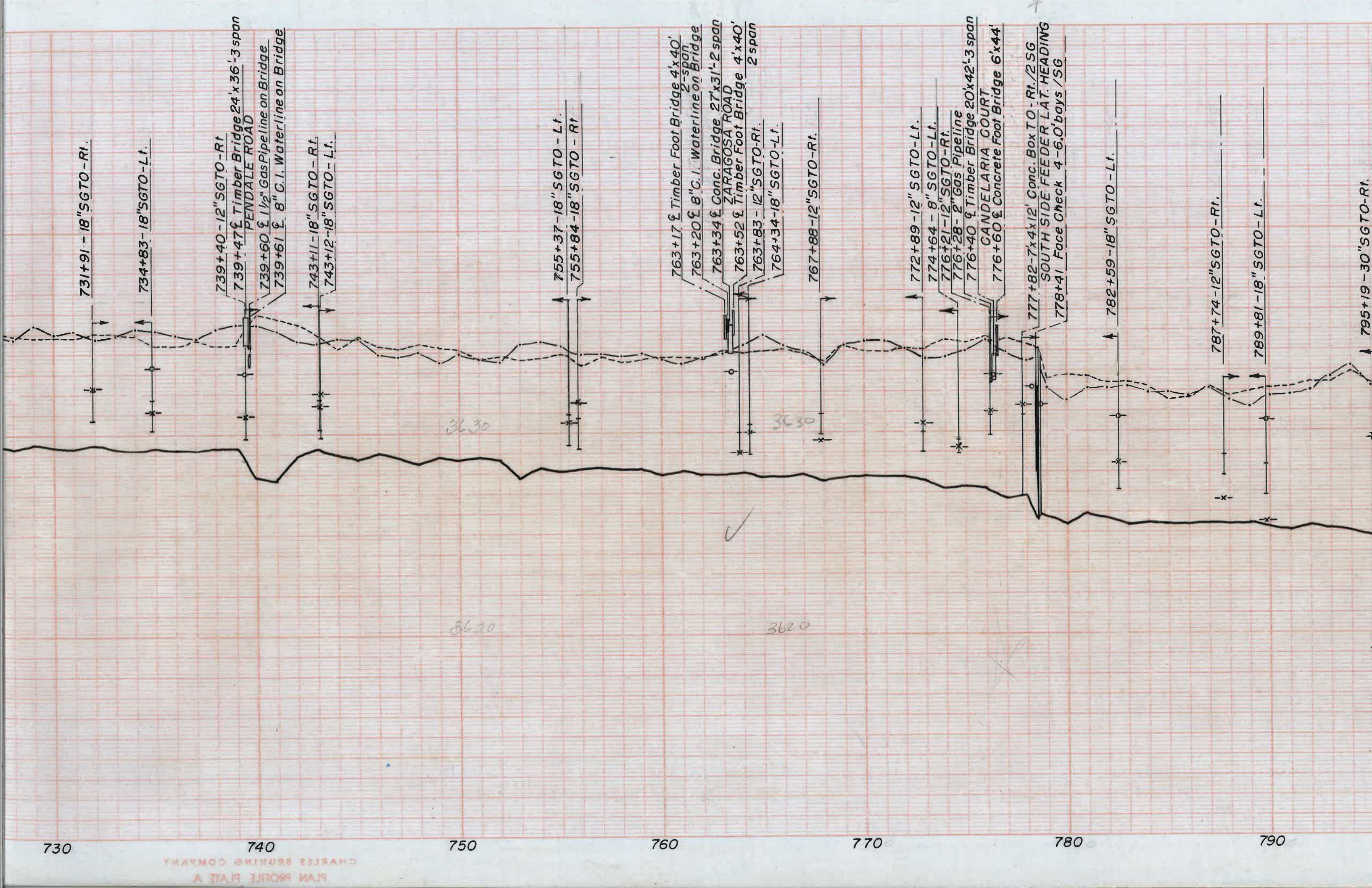


730 740 750 760 770 780 790



731+91 - 18" SGTO - Rt.

734+83 - 18" SGTO - Lt.

739+40 - 12" SGTO - Rt.

739+47 $\frac{1}{2}$ Timber Bridge 24' x 36' - 3 span
PENDALE ROAD

739+60 $\frac{1}{2}$ Gas Pipeline on Bridge

739+61 $\frac{1}{2}$ 8" C.I. Waterline on Bridge

743+11 - 18" SGTO - Rt.

743+12 - 18" SGTO - Lt.

3630

3620

755+37 - 18" SGTO - Lt.

755+84 - 18" SGTO - Rt.

760

763+17 $\frac{1}{2}$ Timber Foot Bridge 4' x 40' 2-span

763+20 $\frac{1}{2}$ 8" C.I. Waterline on Bridge

763+34 $\frac{1}{2}$ Conc. Bridge 27' x 31' - 2 span
ZARAGOSA ROAD

763+52 $\frac{1}{2}$ Timber Foot Bridge 4' x 40' 2 span

763+83 - 12" SGTO - Rt.

764+34 - 18" SGTO - Lt.

3630

3620

767+88 - 12" SGTO - Rt.

770

772+89 - 12" SGTO - Lt.

774+64 - 8" SGTO - Lt.

776+21 - 12" SGTO - Rt.

776+28 - 2" Gas Pipeline

776+40 $\frac{1}{2}$ Timber Bridge 20' x 42' - 3 span
CANDELARIA COURT

776+60 $\frac{1}{2}$ Concrete Foot Bridge 6' x 44'

777+82 - 7' x 4' x 12' Conc. Box TO - Rt. / 2 SG

SOUTH SIDE FEEDER LAT. HEADING

778+41 Face Check 4-6.0 bays / SG

780

782+59 - 18" SGTO - Lt.

787+74 - 12" SGTO - Rt.

789+81 - 18" SGTO - Lt.

790

795+19 - 30" SGTO - Rt.