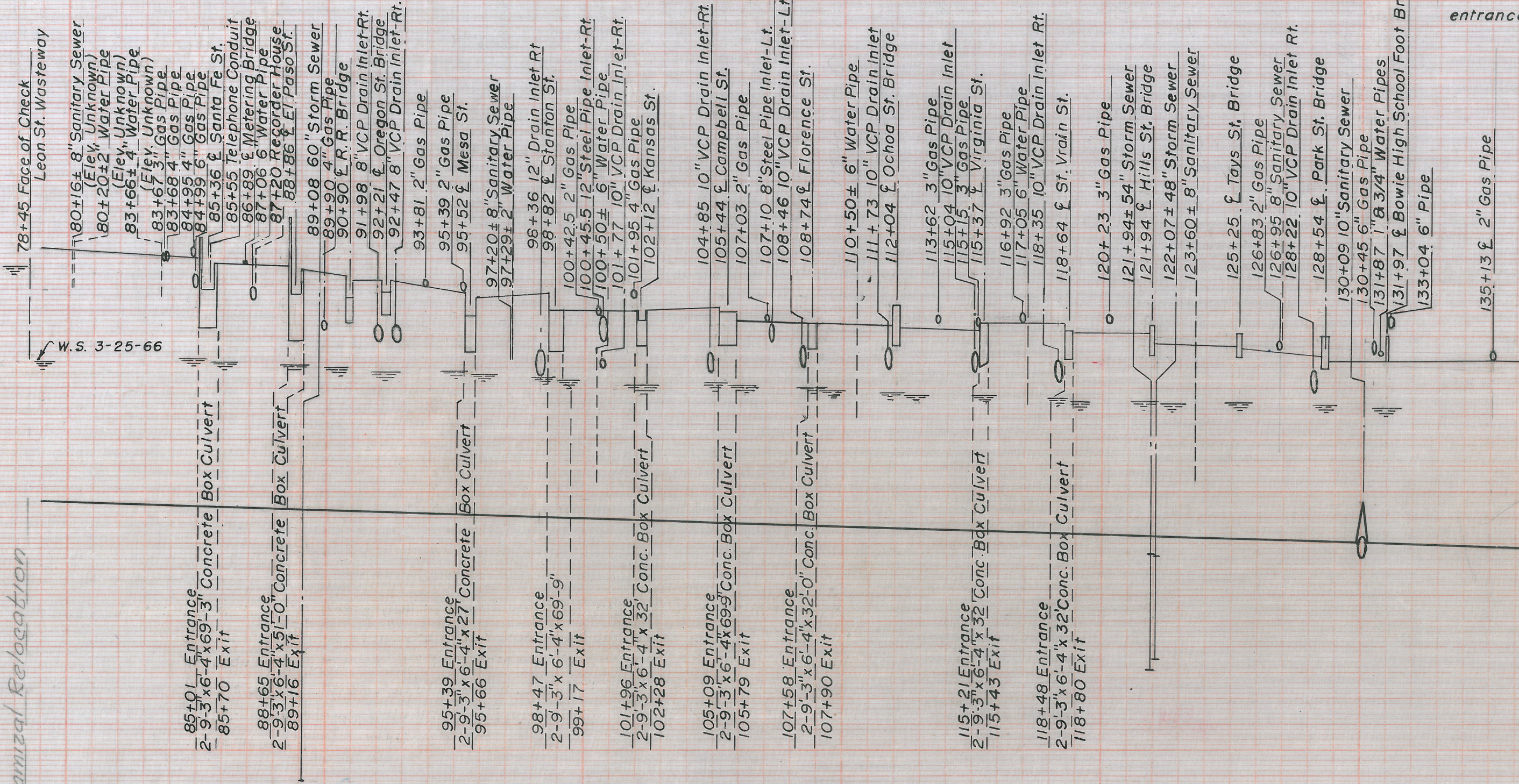


B.M. Elev. 3670.50 Top of right rail of check at Sta. 78+45 Franklin Canal.

B.M. Elev. 36 entrance

Begin Chamizal Relocation



Note: The water surfaces shown in the reach from Sta. 78+45 to Sta. 146+73 of the Franklin Canal were taken from field survey notes of A.L. Hulbert as recorded in Field Book No. 3194, other information such as elevations and dimensions of bottom, top of lining, and structures was obtained from Dwg. 23-503-5814, -5815 and -5816 of the "Proposed Extension and Enlargement of the Franklin Canal."

CHAMIZAL RELOCATION

3660

3650

70

80

90

100

110

120

130