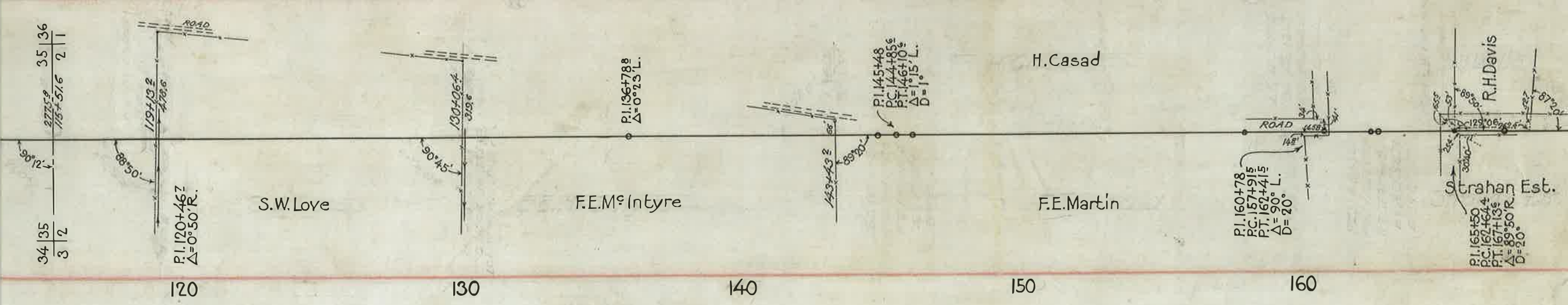
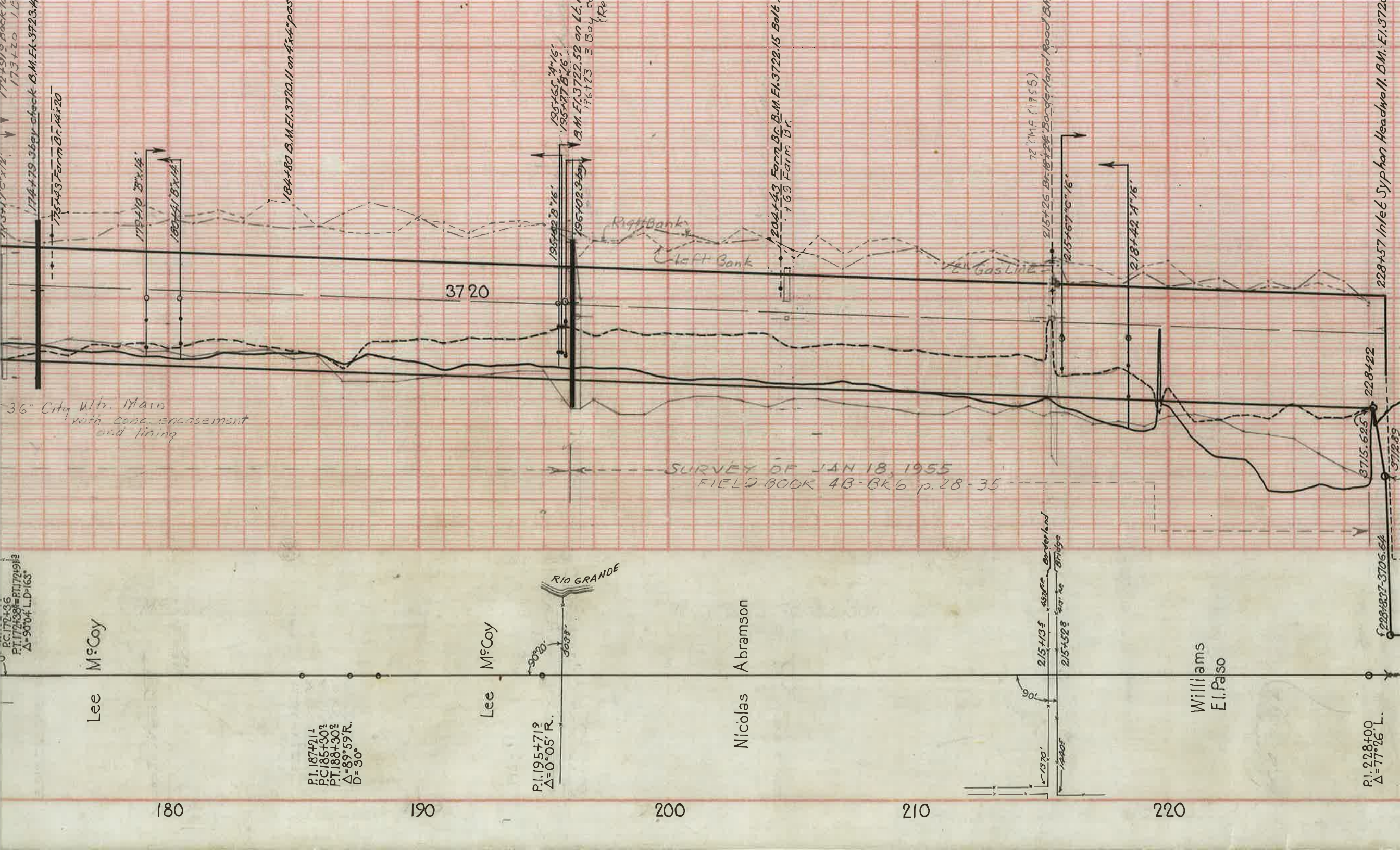


SURVEY OF MAR 3, 1955
 FIELD BOOK 4B-BK6
 p. 36-45





PC 177+56
 PT 174+38 = PT 177+91 1/2
 $\Delta = 90^{\circ}04' L, D = 63'$

Lee McCoy

P.I. 187+21.1
 P.C. 185+50.2
 P.T. 188+30.2
 $\Delta = 89^{\circ}59' R,$
 $D = 30'$

Lee McCoy

P.I. 195+71.2
 $\Delta = 0^{\circ}05' R,$

RIO GRANDE

Nicolas Abramson

215+135 427.8' Borderland
 215+522 507.4' Bridge

Williams
 E.I. Palso

P.I. 228+00
 $\Delta = 77^{\circ}26' L,$

180

190

200

210

220

3720

SURVEY OF JAN 18, 1955
 FIELD BOOK 4B-BK6 p. 28-35

172+51.9 BACK
 173+20
 174+79 36gy check B.M. E.I. 3723.4
 75443 Farm Br. 14x20

184+80 B.M. E.I. 3720.11 on 4x4 posts

195+65 4x16'
 195+77 8x16'
 B.M. E.I. 3722.52 on 4x4
 196+23 3 Bay

204+40 Form Br. B.M. E.I. 3722.15 Bolt
 769 Farm Br.

72 (M.P. 11955)

228+57 Inlet Siphon Headwall B.M. E.I. 3720

Right Bank
 Left Bank

Gas Line

36" City Wtr. Main
 with conc. encasement
 and lining

228+22
 3715.625
 3712.89

228+807-3706.64