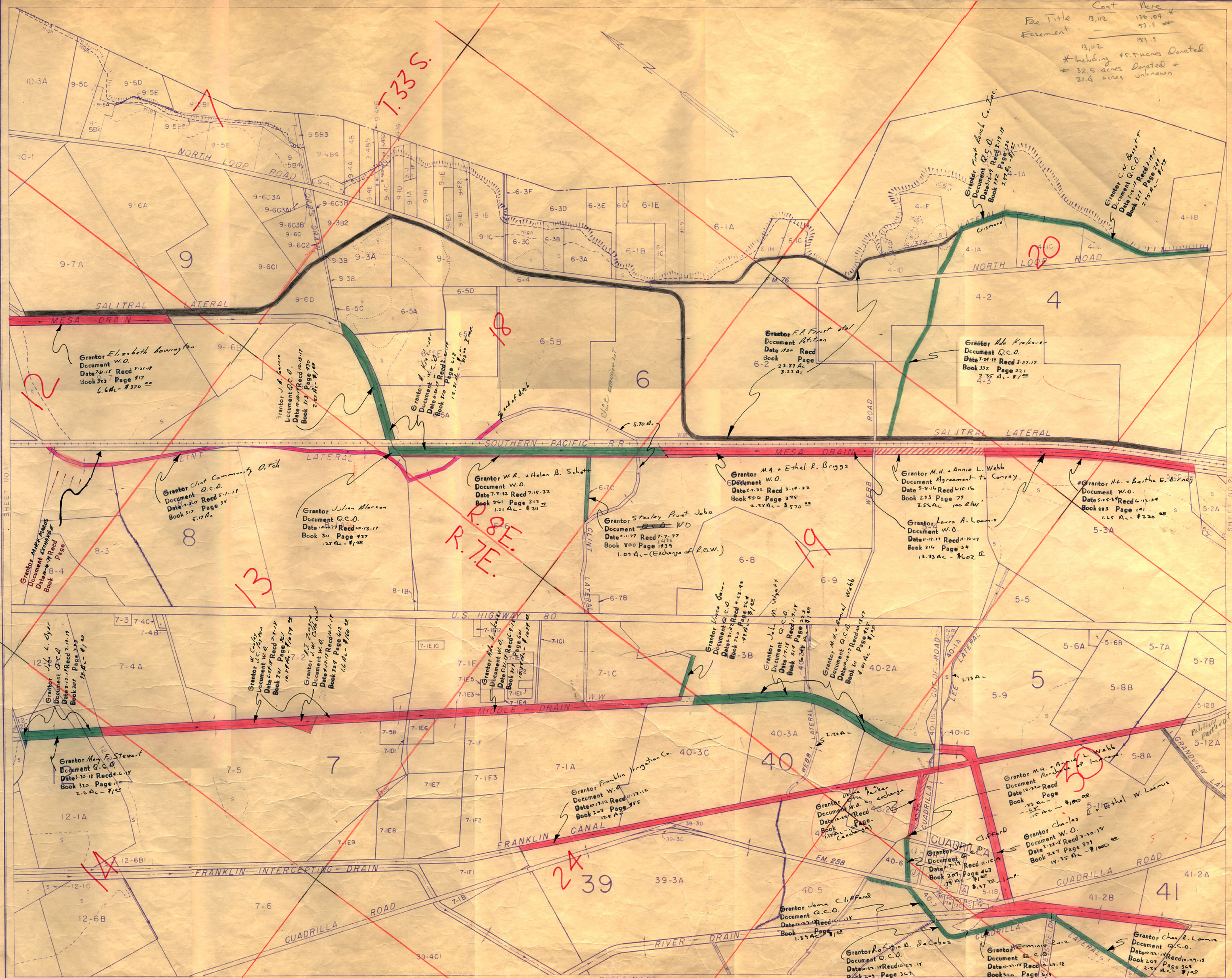


Cost 13,112
 Face Title 130.04 *
 Easement 93.1
 13,112 193.1
 * Including 45.7 acres Donated
 # 32.5 acres Donated +
 21.4 acres unknown



EXPLANATION	
	Canals
	Levees
	Drains
	Suspended Areas
	Roads
	Various Classifications
	Sand
	High Land Valley Land
	Limits of Irrigable Area
	Community and Private Ditches

AUTHORITIES
 Compiled from Location Surveys by the Bureau of Reclamation, Rio Grande location from Boundary Commission. Property lines are from best information available (El Paso County Surveys, Private surveys, Deed notes, etc.) but with no assurance that they are either authentic or valid.

SCALE
 0 500 1000 1500
SAN ELIZARIO GRANT
 DATE 1947. REVISED 1973

PROPERTY NUMBERS
 The Serial No. of a Property is El Paso County Survey Block and Tract numbers, thus 6-8, the figure 6 being the County Block No. and 8 the Tract No. in Block 6. Large numbers indicate County Block No. for the vicinity.

BUREAU OF RECLAMATION-RIO GRANDE PROJECT
IRRIGABLE AREA AND PROPERTY MAP
EL PASO COUNTY WATER IMPROVEMENT DISTRICT NO. 1

EL PASO VALLEY
SHEET - 19
CUADRILLA
CLINT - FABENS