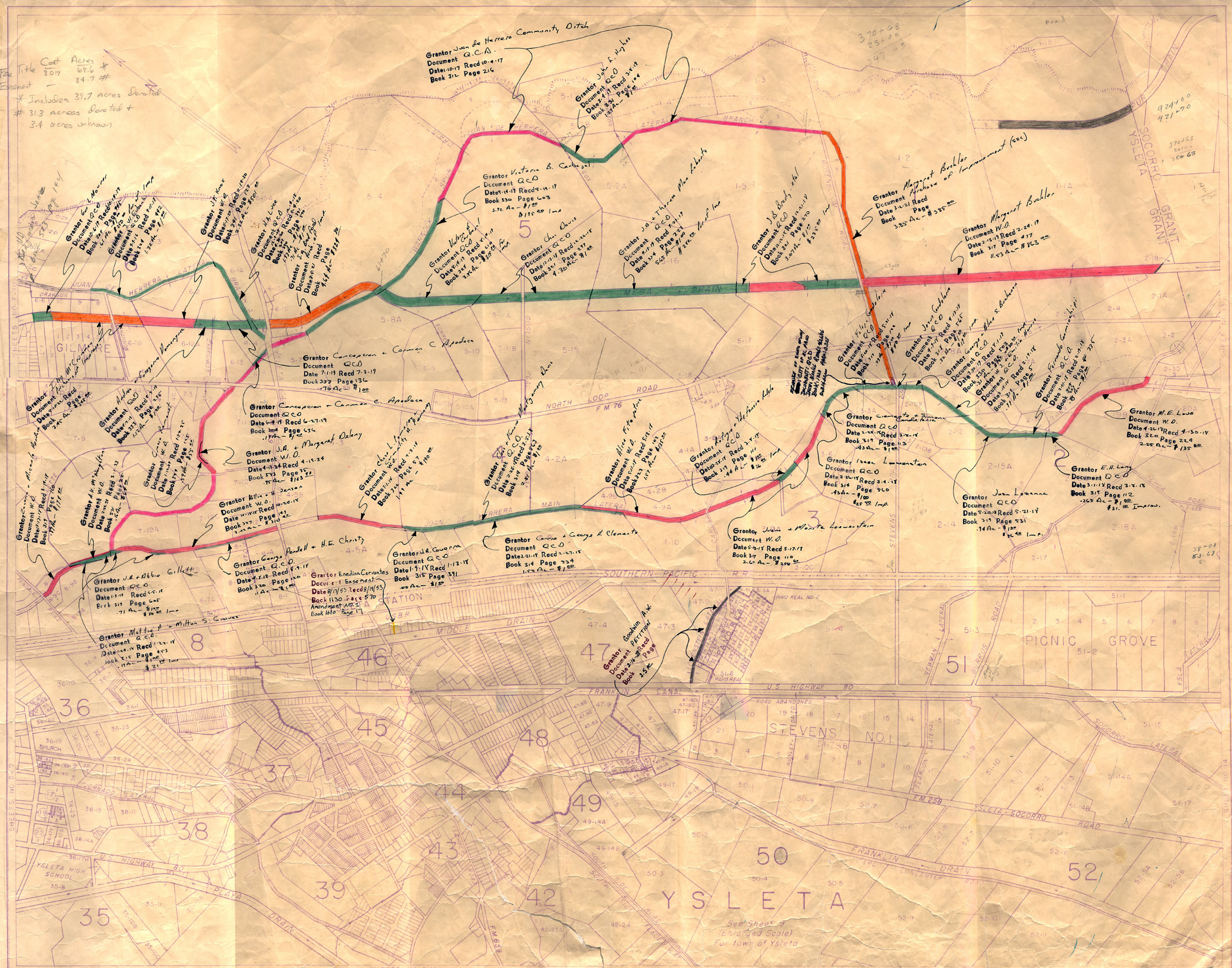


File Title Cost Acres
 3017 67.6 #
 Eisenstat 34.7 #
 * Includes 37.7 acres donated
 # 31.3 acres donated +
 3.4 acres urban



EXPLANATION

	Canals		Levees
	Suspended Areas		Roads
	Various Classifications		High Land
	Sand		Valley Land

AUTHORITIES

Compiled from Location Surveys by the Bureau of Reclamation, Rio Grande location from Boundary Commission, Property lines from best information available (El Paso County Surveys, Private surveys, Deeds, etc.) but with no assurance that they are either authentic or valid.

SCALE

500 feet to 1 inch
 330 1000 1500

YSLETA GRANT
 DATE 1947

PROPERTY NUMBERS

The Serial No. of a Property is El Paso County Survey Block No. followed by the Block No. and the Section No. Large numbers indicate the vicinity for the vicinity.

BUREAU OF RECLAMATION RIO GRANDE PROJECT
 IRRIGABLE AREA AND PROPERTY MAP
 EL PASO COUNTY WATER IMPROVEMENT DISTRICT NO. 1