

For Title
 Easement
 Cont. Acres
 480
 51.1 #
 480
 59.0
 * Includes 2.8 Acres donated
 # 47.9 Acres donated +
 3.2 Acres unknown

See Enlarged Scale
 Sheet No. 6

See Enlarged Scale
 Sheet No. 7

Grantor Estate of Felix Martinez
 Document Q.C.O.
 Date 6-7-19 Recd 6-11-19
 Book 207 Page 403
 1.35 Ac

Grantor John Alayne Kaufman
 Document W.O.
 Date 6-7-39 Recd 6-14-39
 Book 523 Page 144
 1.24 Ac - \$125.00

Grantor K.A. Couch
 Document Q.C.O.
 Date 4-19-19 Recd 4-2-19
 Book 332 Page 349
 1.12 Ac - \$125.00

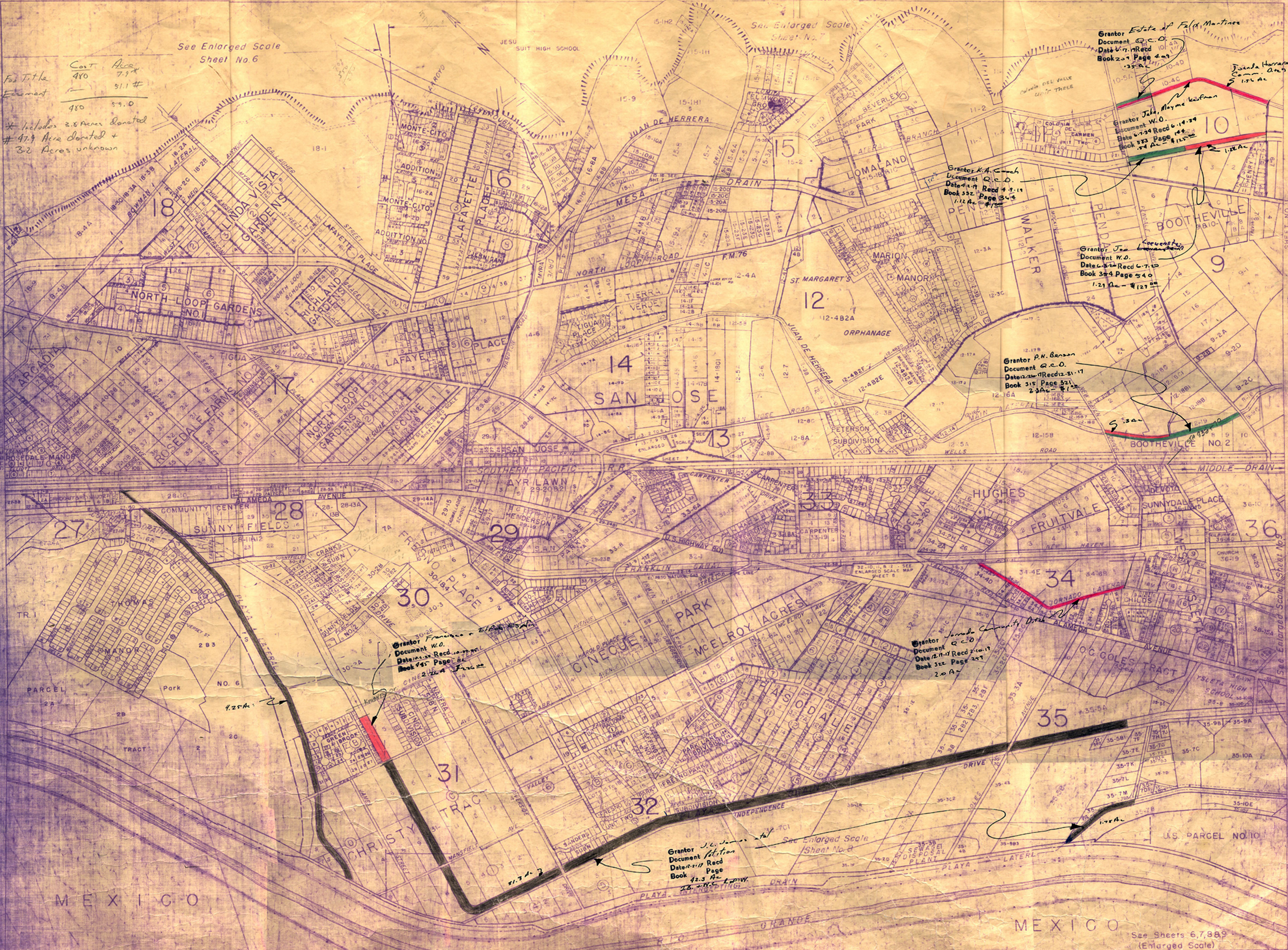
Grantor Joe Coenestien
 Document W.O.
 Date 6-27-19 Recd 7-1-19
 Book 354 Page 540
 1.21 Ac - \$125.00

Grantor P.N. Benson
 Document Q.C.O.
 Date 2-20-19 Recd 2-21-19
 Book 315 Page 521
 2.33 Ac - \$125.00

Grantor Francisco Eladio Espartero
 Document W.O.
 Date 10-22-19 Recd 10-27-19
 Book 465 Page 14
 2.26 Ac - \$125.00

Grantor Jornado Community Dist
 Document Q.C.O.
 Date 12-11-19 Recd 12-11-19
 Book 322 Page 257
 2.0 Ac

Grantor J.L. Jones et al
 Document W.O.
 Date 12-11-19 Recd 12-11-19
 Book 423 Page 12
 1.3 Ac - \$125.00



See Sheets 6, 7, 8, 9
 (Enlarged Scale)

EXPLANATION	
	Cont's
	Expanded Areas
	Levees
	Roads
	Grams
	Community and Private Ditches
	High Low Limits of Irrigable Areas

AUTHORITIES
Compiled from Reclamation Surveys by the Bureau of Reclamation, Rio Grande Division, in Boundary Commission, Property Lines of San Juan River, available at El Paso County Survey, El Paso, Texas, and also from other sources, but with no assurance that they are correct.

SCALE
1" = 100'

PROPERTY NUMBERS
The Serial No. of Property, as shown on County Survey, Block and Tract numbers, and also the Serial No. of the County Block No. and 3rd Tract No. in Block No. Large numbers indicate County Block No.

BUREAU OF RECLAMATION-RIO GRANDE PROJECT
 IRRIGABLE AREA AND PROPERTY MAP
 EL PASO COUNTY WATER IMPROVEMENT DISTRICT NO. 1

EL PASO VALLEY
 SHEET - 10
 COMMUNITY CENTER
 WEST YSLETA