



520. \*  
IN REPLY REFER TO:  
Eng

UNITED STATES  
DEPARTMENT OF THE INTERIOR  
BUREAU OF RECLAMATION  
RIO GRANDE PROJECT  
211 U. S. COURT HOUSE  
EL PASO, TEXAS

ADDRESS ALL COMMUNICATIONS  
TO THE PROJECT MANAGER

April 5, 1954

Memorandum for the Files  
(T. H. Moser)

Subject: Right-of-Way survey on Montoya Main Lateral, Montoya  
"C" Lateral, and Montoya Drain in Block 2, El Paso Co.,  
Texas

A survey was made on various dates in February and March and on April 1, 1954 by Jack Redman and party to establish the rights-of-way on Montoya Main Lat., Montoya "C" Lateral and Montoya Drain in Block 2, El Paso Co., Texas, to establish and monument our rights-of-way adjacent to the Marwood and Eleanor Acres subdivision. The dimensions and bearings shown on the county plat were used wherever possible, and existing right-of-way markers were used whenever they could be located to the extent that it appeared they were reliable. The results of this survey are shown on Dwg. 23-503-5581.

The survey of right-of-way adjacent to Tract 9 was made first. The centerline of Birdway Road was established. The property corner at the intersection of Birdway and Montoya Main Lat. was set. The distance shown on the county plat was measured along Birdway and the county's bearings and distances were used along the east and west sides of Tract 9. This tract had previously been surveyed by Mr. Love of the Love Construction Co., and the corner at the intersection of Montoya "C" Lateral and Montoya Drain coincided with his stake. He had also set a pipe at the intersection of the centerline of Eleanor Way and Montoya "C" Lateral. This point was accepted and the bearings and distances along Montoya "C" Lateral were laid out to meet these established points. Closure was computed on this tract with an error of closure of only 0.13 ft.

Next the south side of Montoya "C" Lateral was laid out. A 50 ft. offset on the west end of this line was used because a house was on the right-of-way. A bearing of  $N12^{\circ}41'W$  was turned off, a computed distance of 232.3 ft. was measured, and an existing pipe corner marker was found. This corner was accepted as the original survey and used as the true corner.

Next the centerline of Frontera Road was established by running from a spike found in the highway to spikes found at Boy Scout Road and Gibson Road and other spikes along the centerline. It was believed that this firmly established the centerline of Frontera Road even though several pipes along the southern property line of Block 2 were at varying dimensions from this established centerline.

The west line of Montoya Main Lateral along Eleanor Acres subdivision was laid out in the following manner. Bearing  $S32^{\circ}30'E$  was extended south and the county's distance of 886.8' was measured to the P.I. An offset of 17.0 ft. measured parallel to Frontera Road was laid out since the view along the property line was obstructed. The corner at the intersection of Montoya Main Lateral and Frontera Road was set by measuring 60.24' from an existing pipe found on the east side of the lateral. A pipe was set in the line with the other pipes found along the north property line of Frontera Road. This pipe was 20.25' from the centerline of the road. A 17.0' offset was set parallel to the road. Setting up on this offset point and taking a backsight on the previously set offset point, the intersection with the centerline of Frontera Road was found. From this intersection, the angle was measured to determine the bearing of the offset line. Distances of 542.1 and 1202.0 were measured along the offset line conforming to the county's distances and beginning 20.0 from the centerline of the road. Corners were set at each of these POT's on the actual property line. The remaining distance was measured as 520.12'.

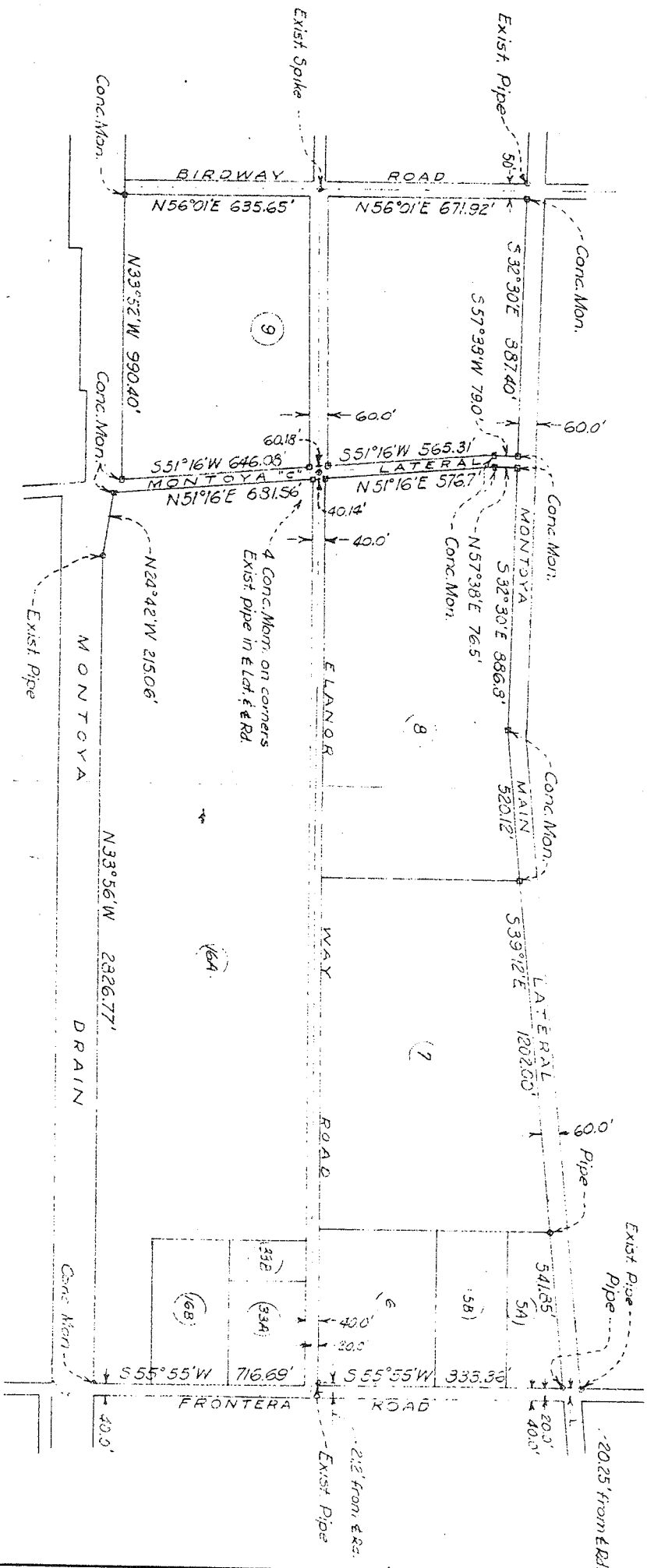
The property line intersection at Frontera Road and Montoya Drain was found by using the county's bearings for each line and wiggling in between previously established points. It was necessary to do this on a 15.0' offset along the drain because of buildings on the right-of-way. The total measured distance along Frontera Road was within 0.15' of the county's distance.

With all corners thus established, all angles were measured again making additive readings twice in an upright position and twice in an inverted position. The bearings were computed and rounded-off to the nearest minute so that the bearings on each side of Montoya "C" Lateral would agree. Closure was then computed and the error of closure was 1.12' or 1 in 8200. Angular closure checked.

All property corners along the west side of Montoya Main Lateral, both sides of Montoya "C" Lateral, and the east side of Montoya Drain in Block 2, El Paso County, Texas, were monumented as shown on Dwg. 23-503-5581.

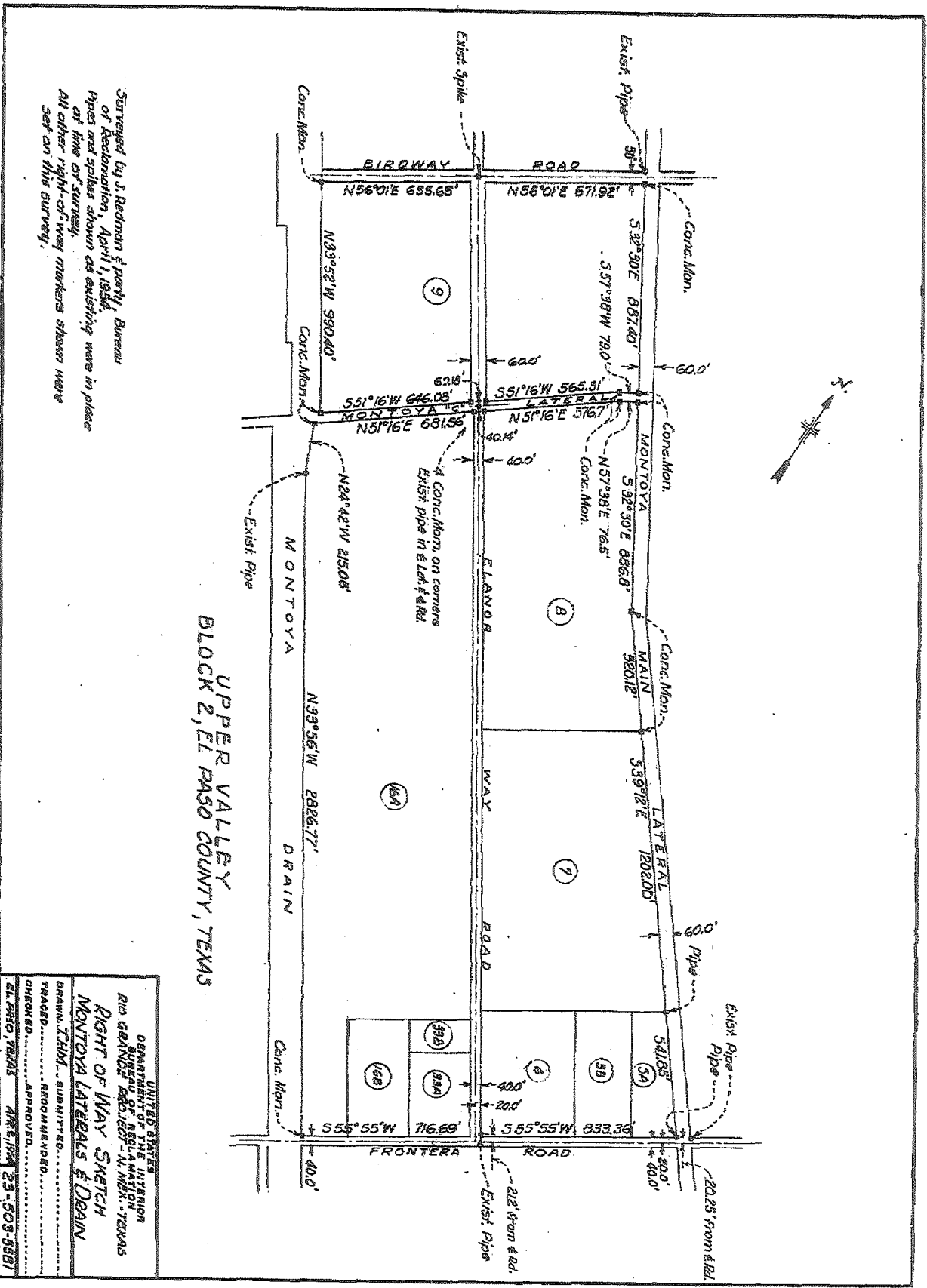
*T. H. Moser*  
T. H. Moser

BLOCK 2, EL PASO COUNTY, TEXAS



Surveyed by J. Redman & party, Bureau of Reclamation, April 1, 1934. Pipes and spikes shown as existing were in place at time of survey. All other right-of-way markers shown were set on this survey.

UNITED STATES DEPARTMENT OF THE INTERIOR BUREAU OF RECLAMATION RIO GRANDE PROJECT - N. MEX. - TEXAS	RIGHT OF WAY SKETCH MONTROYA LATERALS & DRAIN
DRAWN BY: THOMAS	SUBMITTED: .....
CHECKED: .....	RECOMMENDED: .....
APPROVED: .....	APPROVED: .....
EL PASO 75245	APR 2, 1934
	23-503-5581



Surveyed by J. Redman & party, Bureau of Reclamation, April 1, 1934.  
Pipes and spikes shown as existing were in place at time of survey.  
All other right-of-way markers shown were set on this survey.

UPPER VALLEY  
BLOCK 2, EL PASO COUNTY, TEXAS

UNITED STATES  
DEPARTMENT OF THE INTERIOR  
BUREAU OF RECLAMATION  
EL PASO DISTRICT OFFICE, EL PASO, TEXAS  
DRAWN BY: THM - SUBMITTED  
TRACED BY: RDM - RECOMMENDED  
CHECKED BY: RDM - APPROVED  
DATE: MAR 23 - 503-5581  
EL PASO, TEXAS

60 58-50074

NOVEMBER 25, 1974

4