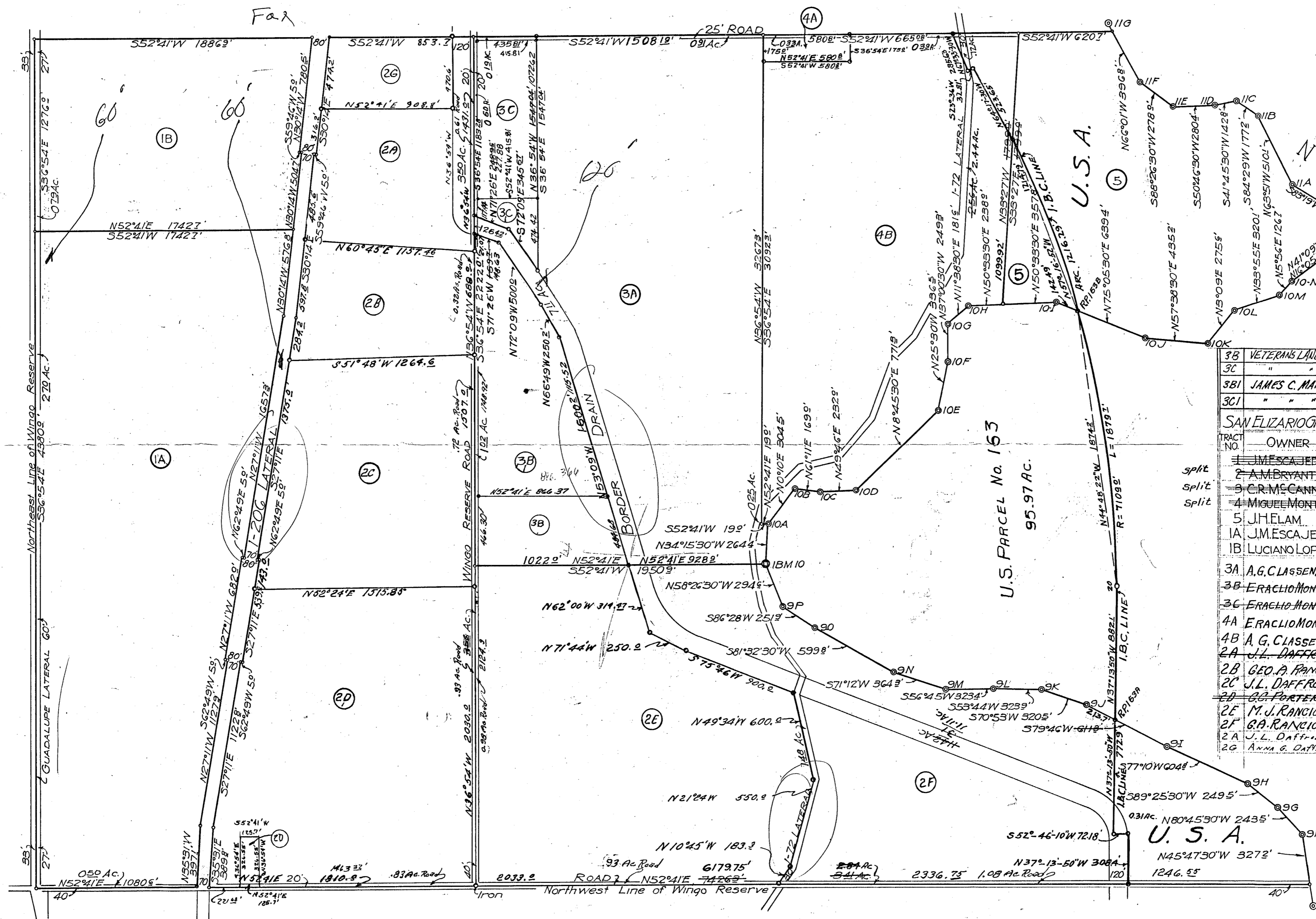


Manuel Calderon D.E. with Calderon Engineering asked the District for some information re Row issue for the Guadalupe, I-206 & Border Drain. I told him that the District records were vague but that the District Patrons dictated the Canals had 80' Row laterals had 60' & Drains had 120'

|     |           |       |        |
|-----|-----------|-------|--------|
| 2D  |           | 1.00  | 0.943  |
| 2D1 | 1274-1798 | 77.59 | 75.897 |

SAN ELIZARIO GRANT  
BLOCK NO 60

BLOCK 62



|                                 |                   |                          |
|---------------------------------|-------------------|--------------------------|
| 3B                              | VETERANS LAND BD  | 10.00                    |
| 3C                              | "                 | 10.00                    |
| 3B1                             | JAMES C. MANN     | 22.72                    |
| 3C1                             | "                 | 2.29                     |
| SAN ELIZARIO GRANT-BLOCK NO 60. |                   |                          |
| TRACT NO.                       | OWNER             | TOTAL NET ACRES          |
| 1                               | J.M. ESCAJEDA     | 19376 18977              |
| 2                               | A.M. BRYANT       | 37549 35182 35354 331.07 |
| 3                               | C.R. McCANN       | 15768 14760              |
| 4                               | MIGUEL MONTOYA    | 9909 9556 95.61 924.8    |
| 5                               | J.H. ELAM         | 7299 6.45 6.45           |
| 1A                              | J.M. ESCAJEDA     | 140.59 13739             |
| 1B                              | LUCIANO LOPEZ     | 53.14 5235               |
| 3A                              | A.G. CLASSEN, TR. | 110.87 102.60            |
| 3B                              | ERACLIO MONTOYA   | 3374 3272                |
| 3C                              | ERACLIO MONTOYA   | 13.87 12.82              |
| 4A                              | ERACLIO MONTOYA   | 233 200                  |
| 4B                              | A.G. CLASSEN, TR. | 9328 9045                |
| 2A                              | J.L. DAFFRON      | 32.35 29.29              |
| 2B                              | GEO. A. RANCICH   | 21.65 21.23              |
| 2C                              | J.L. DAFFRON      | 47.23 47.21              |
| 2D                              | G.A. PORTER JR.   | 76.49 76.84              |
| 2E                              | M.J. RANCICH      | 90.81 89.30              |
| 2F                              | G.A. RANCICH      | 81.22 67.33              |
| 2A                              | J.L. Daffron      | 19.720                   |
| 2G                              | Anna G. Daffron   | 9.520                    |

Block 61

Block 55

Block 59

2/17/01

SURVEYED BY J.L. Schafers, DEPUTY COUNTY SURVEYOR  
COMPUTED & PLOTTED BY C.R. Holt  
APPROVED BY J.W. Carter, COUNTY SURVEYOR  
SCALE 1" = 500 FT. 1930

Checked by George C. Flynn

Trs. 2, 4 & 5 Changed @ I.B.C. Line 6-27-38.