

780. COOPER, J.M. ET AL I-136 LATERAL (COPY)

0033-0088-0018-00

780.

STATE OF TEXAS)

COUNTY OF EL PASO)

File

13-24
424

KNOW ALL MEN BY THESE PRESENTS, That we, the undersigned, owners of land situate in the County of El Paso, and State of Texas, and within the boundaries of the El Paso County Water Improvement District No. 1, being desirous of securing improved, adequate and more efficient irrigation facilities for our lands in accordance with plans formulated and to be hereafter formulated by the United States of America under the provisions of the Act of Congress approved June 17, 1902 (32 Stat., 388) and acts amendatory thereof and supplementary thereto, pursuant to contract of January 17, 1920, between the Secretary of the Interior and the said El Paso County Water Improvement District No. 1, for and in consideration of the benefits to be derived from the construction, reconstruction, or improvement, and subsequent operation and maintenance of irrigation and other works upon or in the vicinity of our lands, and for other valuable considerations, hereby agree to convey to the United States all necessary right of way over and across any and all tracts of land belonging to the undersigned, or any of them for what is known as the Border Lateral as the same is now located and staked out on the ground or as the same may hereafter be duly located and staked out by the proper representatives of the United States Reclamation Service, the location being shown approximately on the map attached hereto. Said right of way shall be conveyed to the United States by proper quitclaim deed or deeds, or other appropriate instrument in writing, at any time such conveyance may be demanded by the proper agents and representatives of the United States after the construction and operation of said lateral shall have been definitely determined upon by the United States, or actually constructed and in operation.

IN WITNESS WHEREOF, we have hereunto affixed our hands and seals this
 _____ day of _____ 1923.

J. M. ... 48-57 _____

B. A. ... 56) *Mrs. J. M. Cooper* _____

Jessie Harris 56) *Pedro Garcia* _____

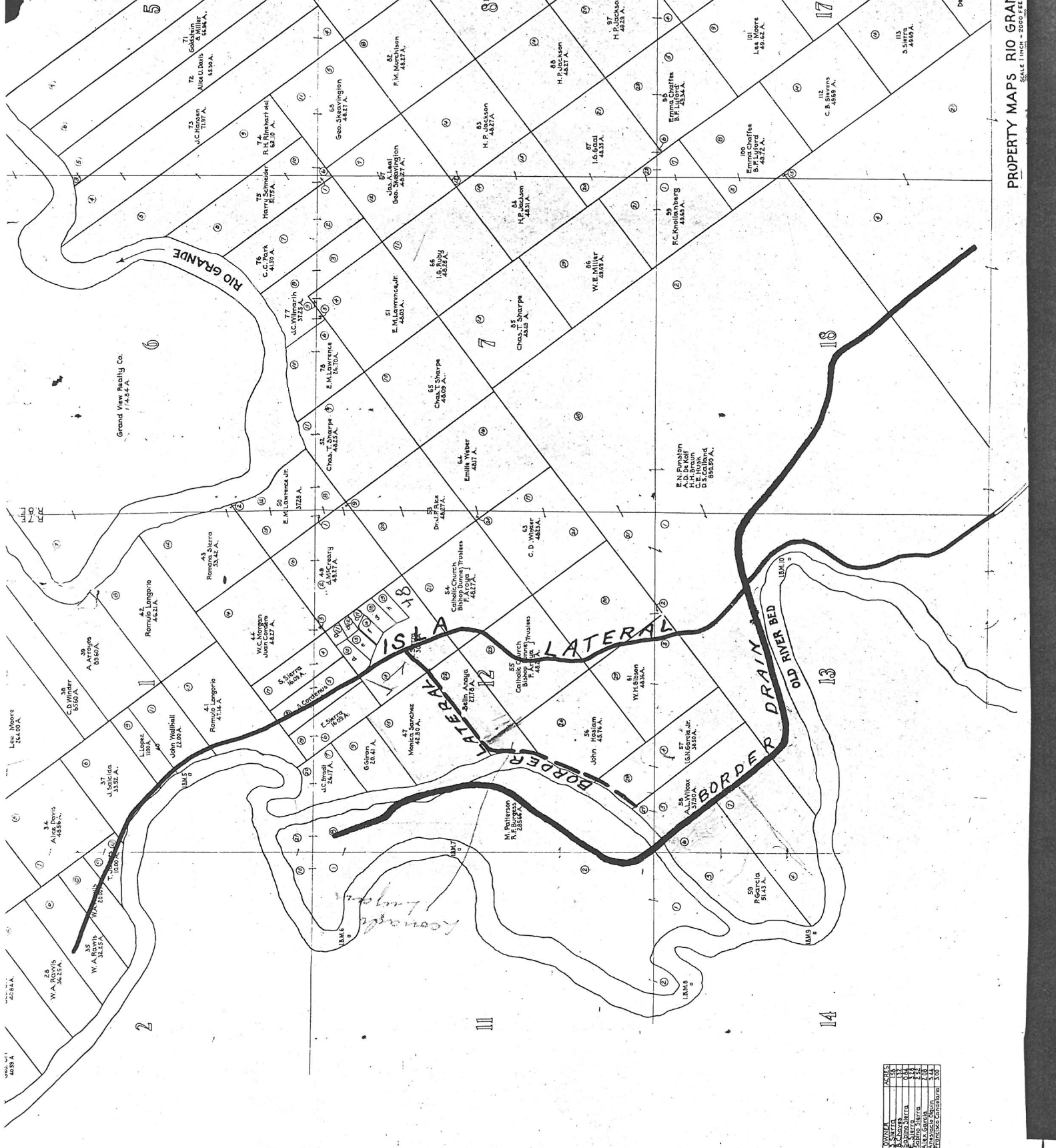
Leonard ... _____

Jesusita ... Lower part 44 _____

Braun ... _____

Albert L. ... _____

J. B. ... *Mrs. J. C. ...*



PROPERTY MAPS RIO GRAN
SCALE 1 INCH = 2000 FEET

NO.	NOMBRE	ACRES
1	W.A. RIOS	32.25
2	W.A. RIOS	36.25
3	W.A. RIOS	36.25
4	W.A. RIOS	36.25
5	W.A. RIOS	36.25
6	W.A. RIOS	36.25
7	W.A. RIOS	36.25
8	W.A. RIOS	36.25
9	W.A. RIOS	36.25
10	W.A. RIOS	36.25
11	W.A. RIOS	36.25
12	W.A. RIOS	36.25
13	W.A. RIOS	36.25
14	W.A. RIOS	36.25
15	W.A. RIOS	36.25
16	W.A. RIOS	36.25
17	W.A. RIOS	36.25
18	W.A. RIOS	36.25
19	W.A. RIOS	36.25
20	W.A. RIOS	36.25
21	W.A. RIOS	36.25
22	W.A. RIOS	36.25
23	W.A. RIOS	36.25
24	W.A. RIOS	36.25
25	W.A. RIOS	36.25
26	W.A. RIOS	36.25
27	W.A. RIOS	36.25
28	W.A. RIOS	36.25
29	W.A. RIOS	36.25
30	W.A. RIOS	36.25
31	W.A. RIOS	36.25
32	W.A. RIOS	36.25
33	W.A. RIOS	36.25
34	W.A. RIOS	36.25
35	W.A. RIOS	36.25
36	W.A. RIOS	36.25
37	W.A. RIOS	36.25
38	W.A. RIOS	36.25
39	W.A. RIOS	36.25
40	W.A. RIOS	36.25
41	W.A. RIOS	36.25
42	W.A. RIOS	36.25
43	W.A. RIOS	36.25
44	W.A. RIOS	36.25
45	W.A. RIOS	36.25
46	W.A. RIOS	36.25
47	W.A. RIOS	36.25
48	W.A. RIOS	36.25
49	W.A. RIOS	36.25
50	W.A. RIOS	36.25
51	W.A. RIOS	36.25
52	W.A. RIOS	36.25
53	W.A. RIOS	36.25
54	W.A. RIOS	36.25
55	W.A. RIOS	36.25
56	W.A. RIOS	36.25
57	W.A. RIOS	36.25
58	W.A. RIOS	36.25
59	W.A. RIOS	36.25
60	W.A. RIOS	36.25
61	W.A. RIOS	36.25
62	W.A. RIOS	36.25
63	W.A. RIOS	36.25
64	W.A. RIOS	36.25
65	W.A. RIOS	36.25
66	W.A. RIOS	36.25
67	W.A. RIOS	36.25
68	W.A. RIOS	36.25
69	W.A. RIOS	36.25
70	W.A. RIOS	36.25
71	W.A. RIOS	36.25
72	W.A. RIOS	36.25
73	W.A. RIOS	36.25
74	W.A. RIOS	36.25
75	W.A. RIOS	36.25
76	W.A. RIOS	36.25
77	W.A. RIOS	36.25
78	W.A. RIOS	36.25
79	W.A. RIOS	36.25
80	W.A. RIOS	36.25
81	W.A. RIOS	36.25
82	W.A. RIOS	36.25
83	W.A. RIOS	36.25
84	W.A. RIOS	36.25
85	W.A. RIOS	36.25
86	W.A. RIOS	36.25
87	W.A. RIOS	36.25
88	W.A. RIOS	36.25
89	W.A. RIOS	36.25
90	W.A. RIOS	36.25
91	W.A. RIOS	36.25
92	W.A. RIOS	36.25
93	W.A. RIOS	36.25
94	W.A. RIOS	36.25
95	W.A. RIOS	36.25
96	W.A. RIOS	36.25
97	W.A. RIOS	36.25
98	W.A. RIOS	36.25
99	W.A. RIOS	36.25
100	W.A. RIOS	36.25