

R.G.E.P. & S.F.R.R.
R.O.W.

CONC. POST
FOUND IN PLACE

U.S.B.R. MON
FOUND PLACE

CH. BRG. =
S 65° 06' 33" E
R = 187.43'
A = 35.06'
C = 35.01'
Δ = 10° 43' 05"
T = 17.58'

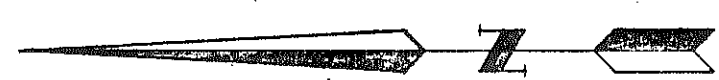
N 30° 15' 00" E ~ 0.97'

R = 108.43'
A = 114.91'
C = 109.61'
Δ = 60° 43' 12"
T = 63.52'
CH. BRG. =
N 60° 36' 36" E

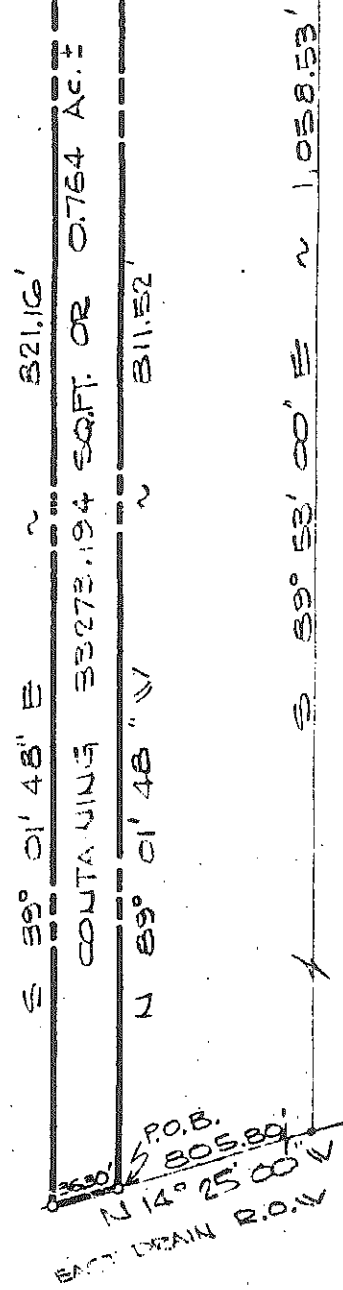
R = 143.43'
A = 152.01'
C = 144.99'
T = 84.02'
Δ = 60° 48' 12"
CH. BRG. =
S 60° 36' 36" W

EXISTING DETENTION FARM LATERAL

TRACT 5-C
TRACT 4-A
TRACT 3-A
TRACT 2-B



DETENTION FARM LATERAL
WASTEWAY
BEING A PORTION OF TRACT 5C
UPPER VALLEY BLOCK 22
EL PASO COUNTY TEXAS
DATE: 8/7/74 ; SCALE: 1"=100'



CERTIFICATION:

PLAT OF SURVEY

I hereby certify that the foregoing survey was made by and under the supervision of Bradley Roe, Registered Professional Engineer No. 31886 and that this survey is true and correct to the best of my knowledge and belief.

Bradley Roe
Bradley Roe, P.E. No. 31886

CREMANS, INC.
ENGINEERS - PLANNERS
EL PASO, TEXAS

R.G. E.P. & S.F. R.I.C. 7
P.S.D.V.

S 26° 52' 00" W

N 2° 52' 00" W

PROB. 818.32' 1823.50'

CONC. POST
(FOUND IN PLACE)
TRACT 3-C
TRACT 4-A
U.S.B.L.
MON.
(FOUND IN PLACE)
TRACT 3-A
TRACT 2-B



R=150.43'
A=161.19'
C=154.21'
Δ=60° 41' 58"
T=82.25'
CH. BRG. =
S 57° 17' 16" E

R=187.43'
A=198.07'
C=215.21'
Δ=67° 41' 58"
T=109.54'
CH. BRG. =
N 57° 17' 16" W

S 26° 56' 17" E ~ 64.66'
CONTAINING 640 F.S. 2008 EQ. F. OF 1.5' 1.5' 1.5'
N 26° 56' 17" W ~ 64.66'

R=187.76'
A=205.51'
C=195.40'
Δ=60° 42' 29"
T=114.41'
CH. BRG. =
S 58° 17' 57" E

R=122.76'
A=167.20'
C=158.38'
Δ=62° 42' 29"
T=93.38'
CH. BRG. =
N 58° 17' 27" W

DEFINITION
BEING A PORTION OF "TRACT 3C" OF "EL PASO COUNTY TRACTS"
BLOCK 22, EL PASO COUNTY, TEXAS
DATE: 8/7/74

PLAT OF SURVEY

I hereby certify that the foregoing survey was made by and under the supervision of Bradley Roe, Registered Professional Engineer No. 31886 and that this survey is true and correct to the best of my knowledge and belief.

Bradley Roe, P.E.
CREMANS, INC.

CREMANS, INC.
ENGINEERS - PLANNERS
EL PASO, TEXAS

EXHIBIT B

S 89° 38' 56" E ~ 642.58'
N 33° 33' 55" W ~ 633.35'
EAST DRAIN R.O.W. LINE 7
N 14° 25' 00" W ~ 36.20'

R.G.E.P. & S.F.R.R. R.O.W

CH BRG. N71° 51' 03" E
R: 120.00'
A: 54.45'
CH: 53.99'
Δ: 26° 00' 00"
T: 27.70'

CH BRG. = N71° 51' 03" E
R: 170.00'
A: 77.14'
CH: 76.48'
Δ: 26° 00' 00"
T: 39.25'



S89° 51' 00" E ~ 1389.67'

CH BRG. S53° 21' 02" E
R: 55.00'
A: 70.07'
CH: 65.43'
Δ: 72° 59' 57"
T: 40.70'

CH BRG. S51° 43' 24" E
R: 65.00'
A: 84.65'
CH: 78.79'
Δ: 74° 36' 48"
T: 49.53'

S16° 51' 03" E ~ 655.60'
S14° 25' 00" E ~ 38.09'

AREA = 2.253 ± AC.

S16° 51' 03" E ~ 654.54'
N14° 25' 00" W ~ 36.94'
EAST DRAIN R.O.W.

CH BRG. = S53° 21' 02" E
R: 5.00'
A: 6.37'
CH: 5.95'
Δ: 72° 59' 57"
T: 3.70'

CH BRG. = S51° 43' 24" E
R: 115.00'
A: 149.76'
CH: 139.40'
Δ: 74° 36' 48"
T: 87.63'

S89° 51' 00" E
23.92'

S89° 51' 00" E
10.52'

RELOCATION PLAT
PHASE 1 DETENTION FARM LATERAL
BEING A PORTION OF TRACT 5-C
UPPER VALLEY, BLOCK 22,
EL PASO COUNTY, TEXAS
DATE: 2/5/75

CREMANS, INC.
ENGINEERS - PLANNERS
EL PASO, TEXAS

SCALE: 1" = 50'

EXHIBIT A

TRACT 5-C
TRACT 4-A

S89° 53' 00" E ~ 1058.53'

50.0'

S89° 01' 48" E ~ 703.00'
S89° 08' 57" E ~ 118.10'

S89° 21' 33" E ~ 170.00'
S89° 08' 57" E ~ 118.00'

S89° 01' 48" E ~ 703.00'

842.10'