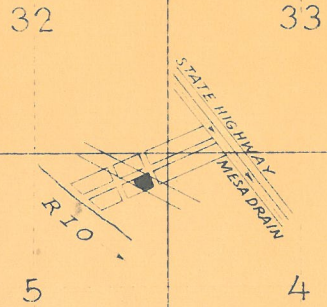


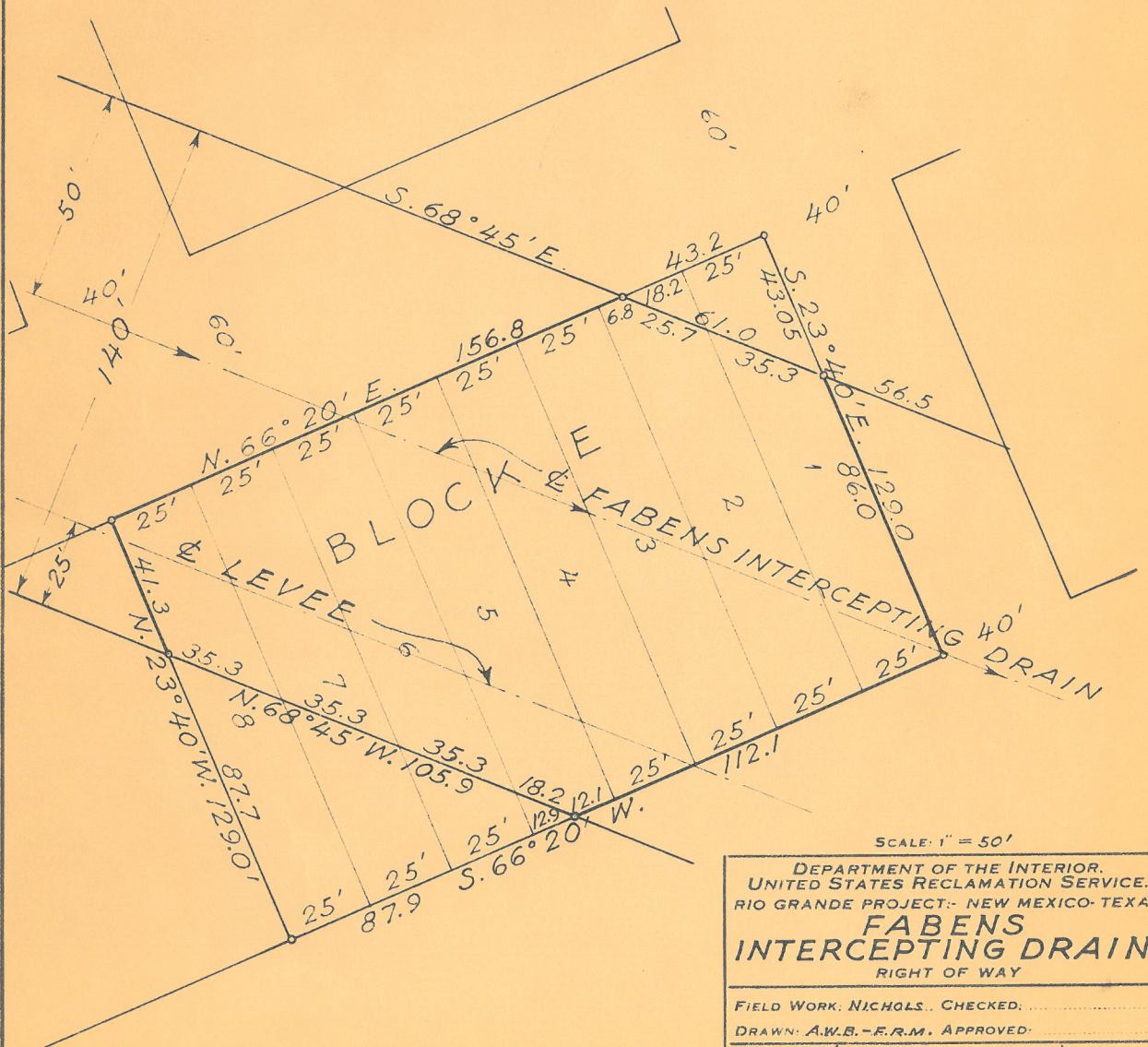
SCALE: 1" = 2000'



Fractional Parts of Lots, 1, 2; 5, 6
7 & 8; All of Lots 3 & 4 of Block
E; Riverside Addition to Fabens
Tex. (Tract 13 of Block 1, Resurvey
of San Elizario, Main Land Grant.)



LOCATION PLAT
S. 5 .. T. 34S .. R. 8 E



DEPARTMENT OF THE INTERIOR.
UNITED STATES RECLAMATION SERVICE.
RIO GRANDE PROJECT - NEW MEXICO - TEXAS
**FABENS
INTERCEPTING DRAIN.**
RIGHT OF WAY

FIELD WORK: NICHOLS. CHECKED:
DRAWN: A.W.B. - E.R.M. APPROVED:

3506L48 EL PASO, TEX., 9-1930