

SCALE 1" = 2000'

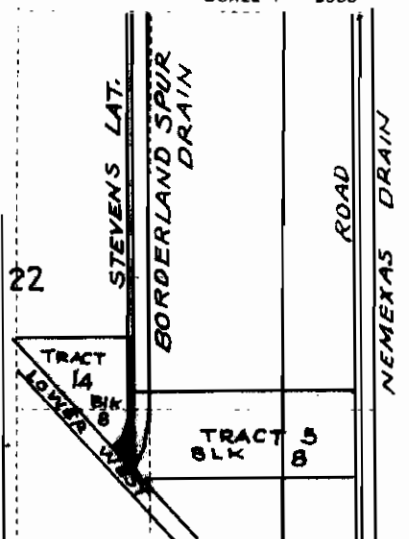
S. 89° 50' E. 200'
N. 89° 50' W. 1302.7' to
N.W. Cor. of Tract.

20'



22

23



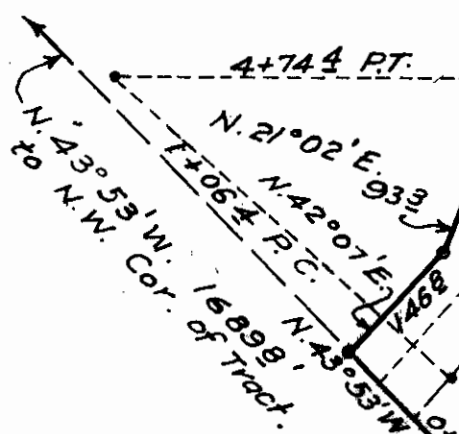
LOCATION PLAT
S. 22 .. T. 28S. R. 3E .. USRS
TRACT 14 BLOCK 8
El Paso County Survey
of Upper Valley.

BLOCK 8
TRACT 14

STEVENS LATERAL
N. 0° 02' W. 1018.2'

DRAIN 7

S. 0° 02' E. 1372.3'



BLOCK 8
TRACT 5

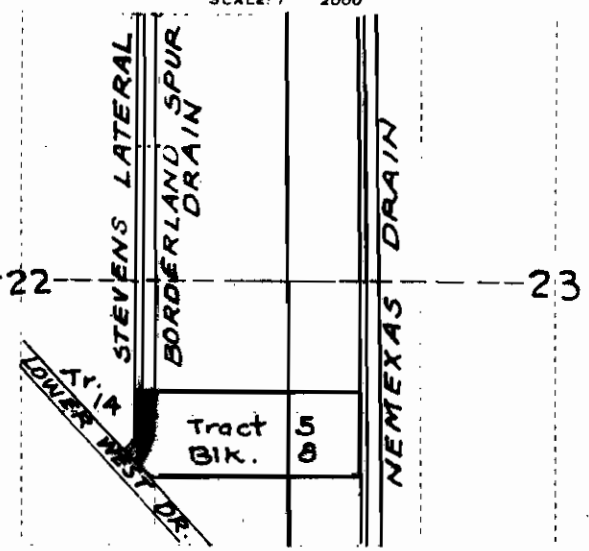
Total Area 1.07 Ac.
Stevens Lat. .25
Area in Drain 0.82 "

N. 89° 54' E. 2300'
To 1. Pipe, S.E. Cor. Tract 5

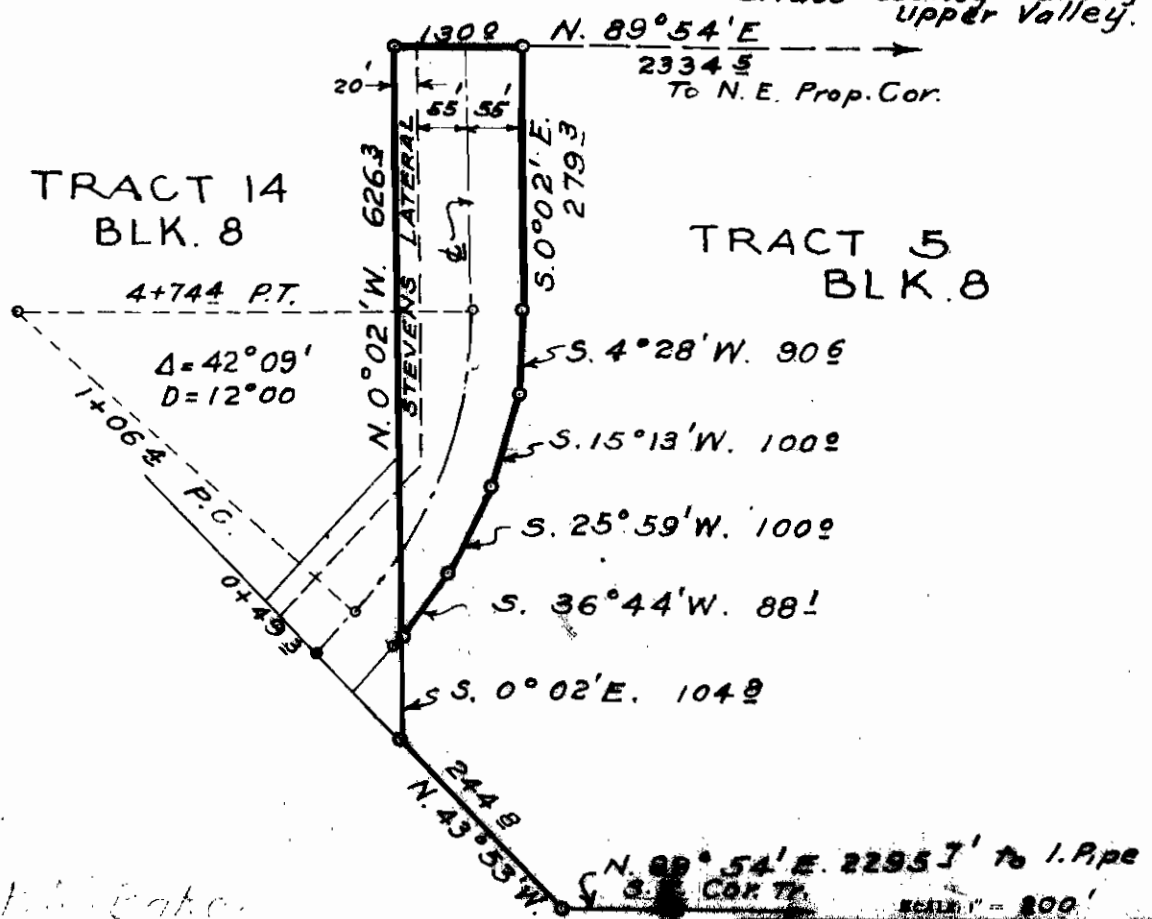
SCALE 1" = 200'

DEPARTMENT OF THE INTERIOR
UNITED STATES RECLAMATION SERVICE
RIO GRANDE DIVISION, EL PASO DISTRICT, TEXAS
STEVENS LATERAL
BORDERLAND SPUR DRAIN
RIGHT OF WAY
DRAWN BY: J. E. H. CHECKED BY: G. K. M.
APPROVED: [Signature]

SCALE: 1" = 2000'



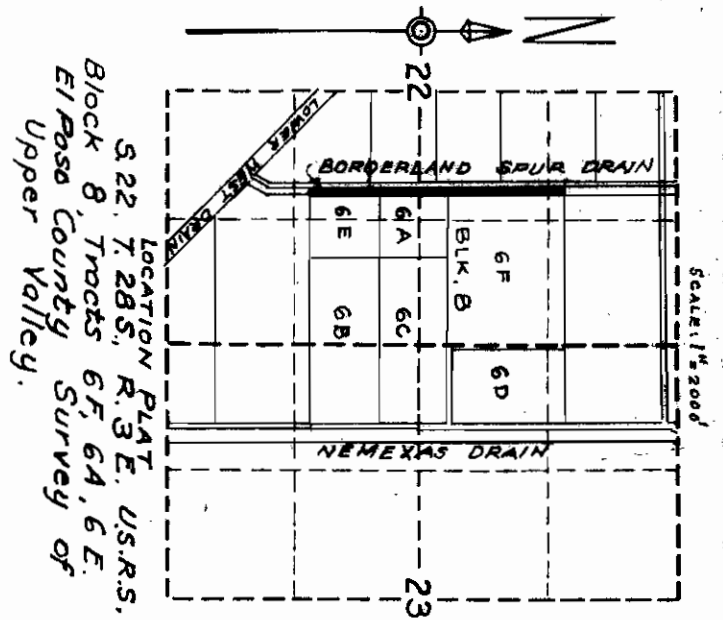
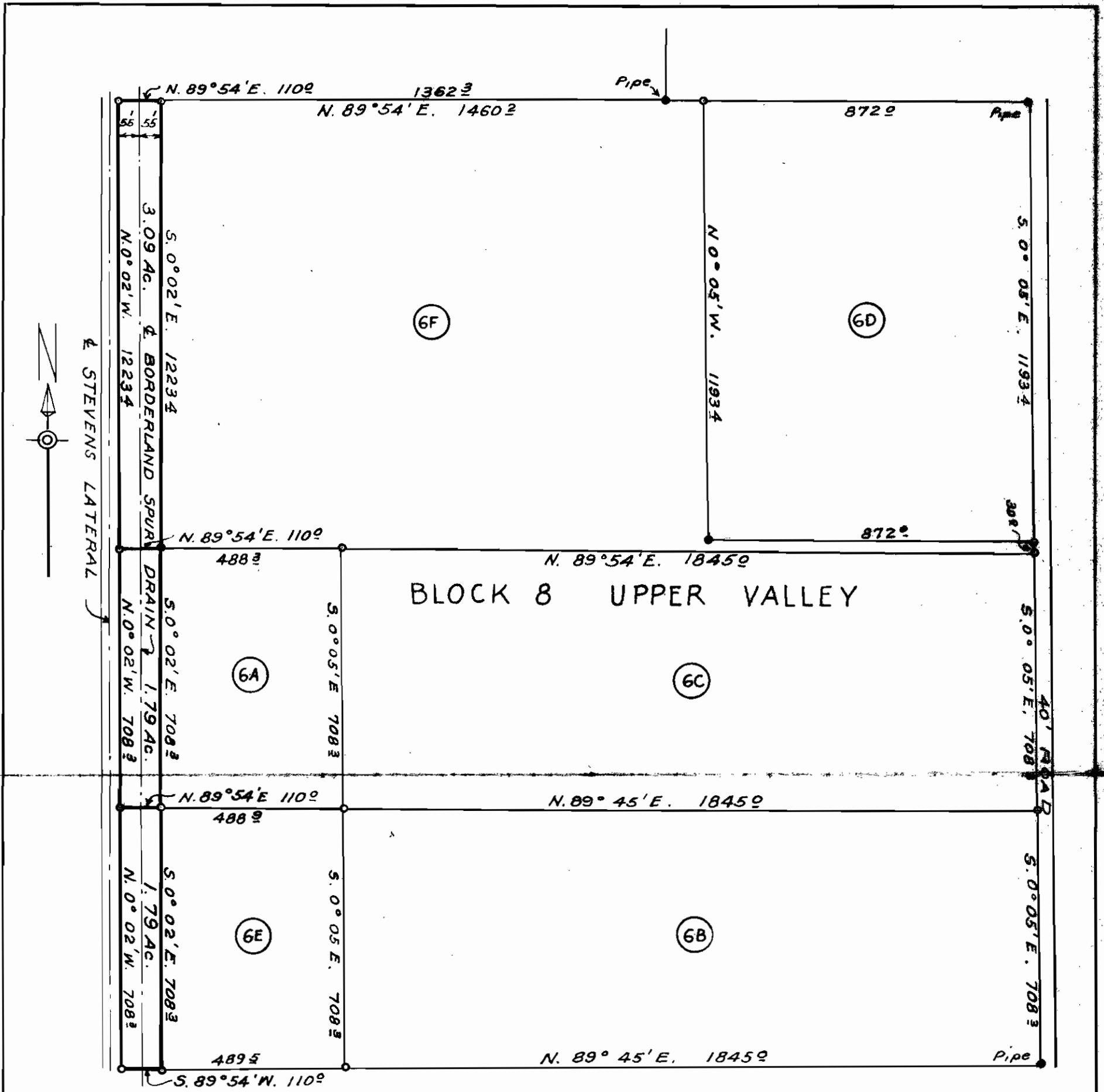
LOCATION PLAT
S. 22 T. 28 S. R. 3 E. U.S.R.S.
TRACT 5 BLK 8
El Paso County Survey of
Upper Valley.



Total Area ----- 1.54 Ac.
Occupied by Stevens
Lateral ----- .21 "
Area for Drain ----- 1.33 "

SCALE: 1" = 800'

DEPARTMENT OF THE INTERIOR,
UNITED STATES RECLAMATION SERVICE,
RIO GRANDE DISTRICT - EL PASO TEXAS
BORDERLAND SPUR DRAIN
RIGHT OF WAY
FIELD WORK: J. E. H. CHECKED: G. W. H.
DRAWN: S. A. APPROVED: _____



Area in Right of Way.
 Tract 6F 3.09 Ac.
 " 6A 1.79 "
 " 6E 1.79 "

3

SCALE 1" = 300'

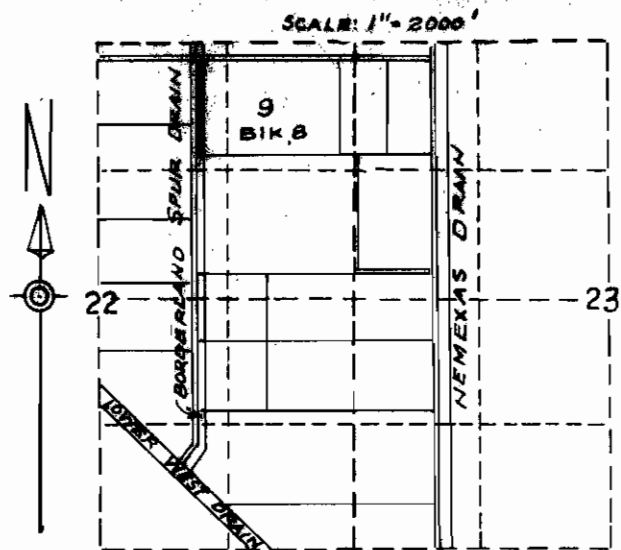
DEPARTMENT OF THE INTERIOR
 BUREAU OF RECLAMATION
 RIO GRANDE PROJECT-NEW MEXICO-TEXAS

BORDERLAND SPUR DRAIN

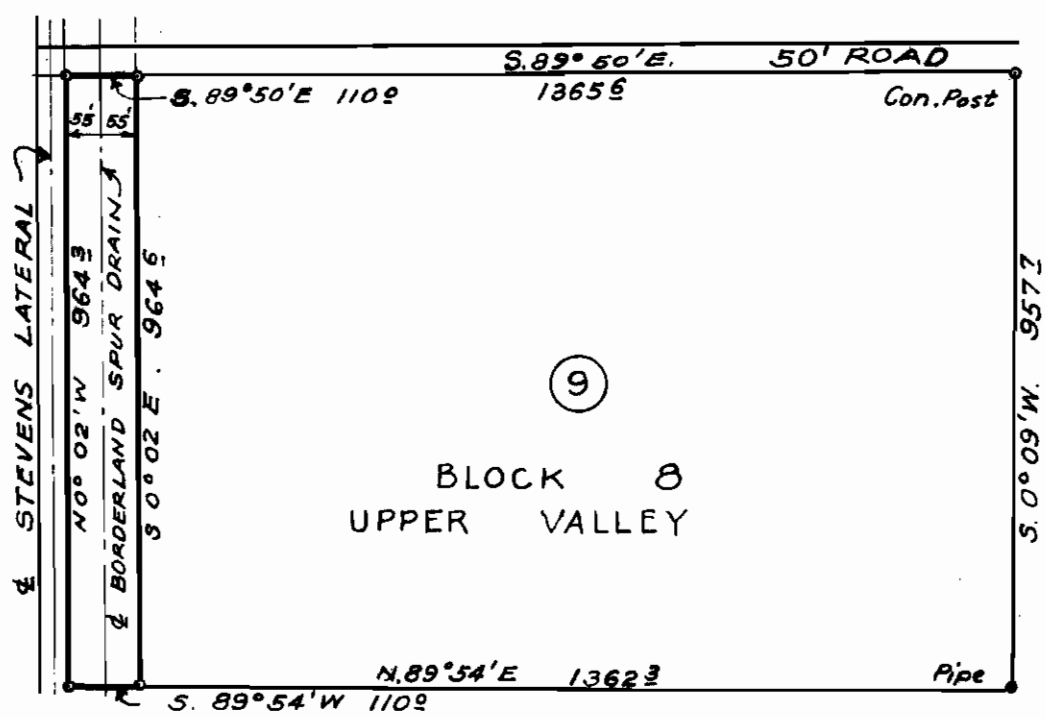
RIGHT OF WAY

FIELD WORK J. B. E. CHECKED G. W. H.
 DRAWN GA. APPROVED

3654 LIB EL PASO, TEX. 3-19-33



LOCATION PLAT
 S. 22, T. 28 S., R. 3 E. U.S.R.S.
 Block 8, Tract 9
 El Paso County Survey of
 Upper Valley.



Area of R. of W. 2.43 Ac.

SCALE 1" = 300'

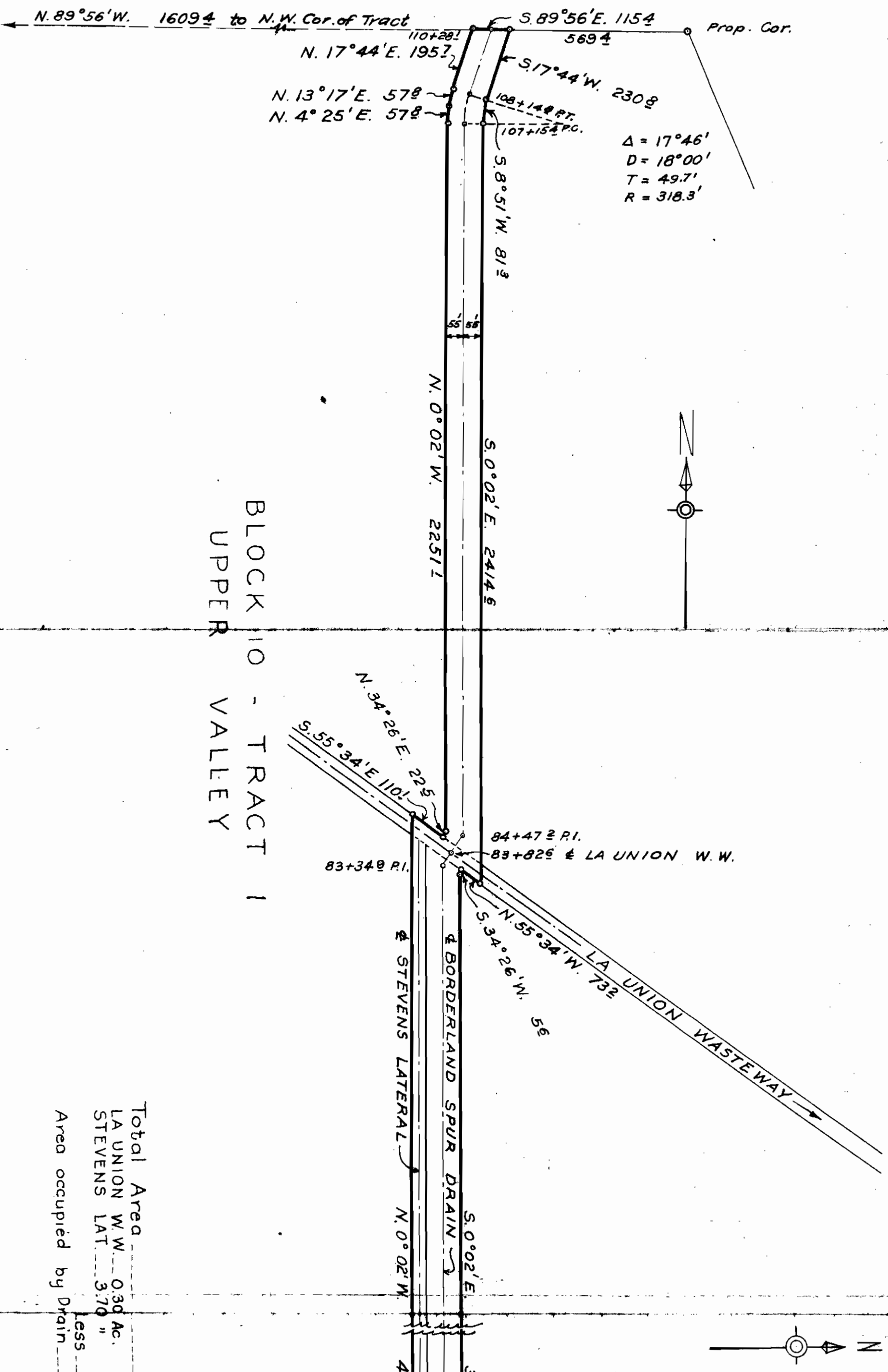
DEPARTMENT OF THE INTERIOR
 BUREAU OF RECLAMATION
 RIO GRANDE PROJECT-NEW MEXICO-TEXAS
BORDERLAND SPUR DRAIN

RIGHT OF WAY

FIELD WORK J.B.E. CHECKED G.W.H.
 DRAWN GA. APPROVED _____

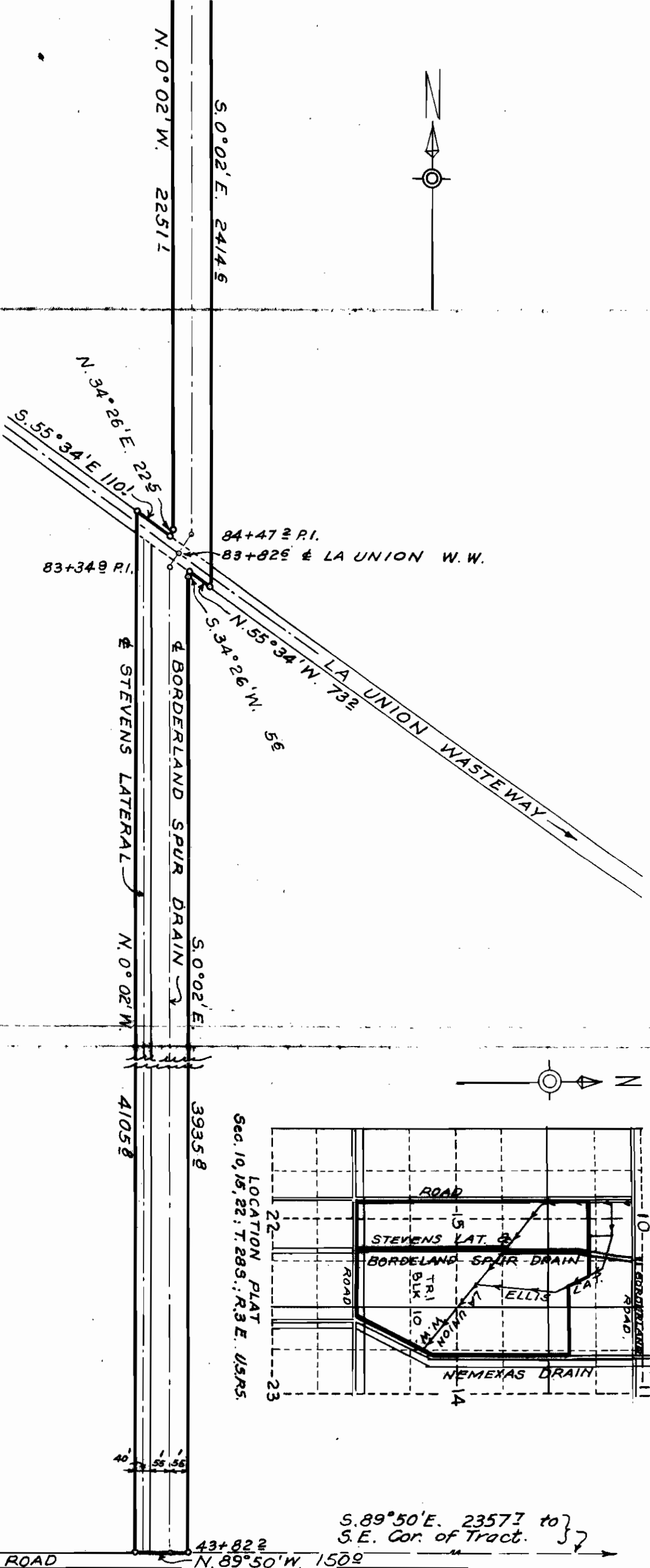
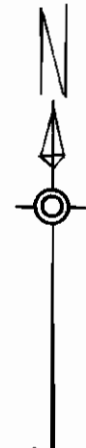
4 3664-L-18 EL PASO, TEX. 3-15-33

BLOCK 10 - TRACT 1
UPPER VALLEY

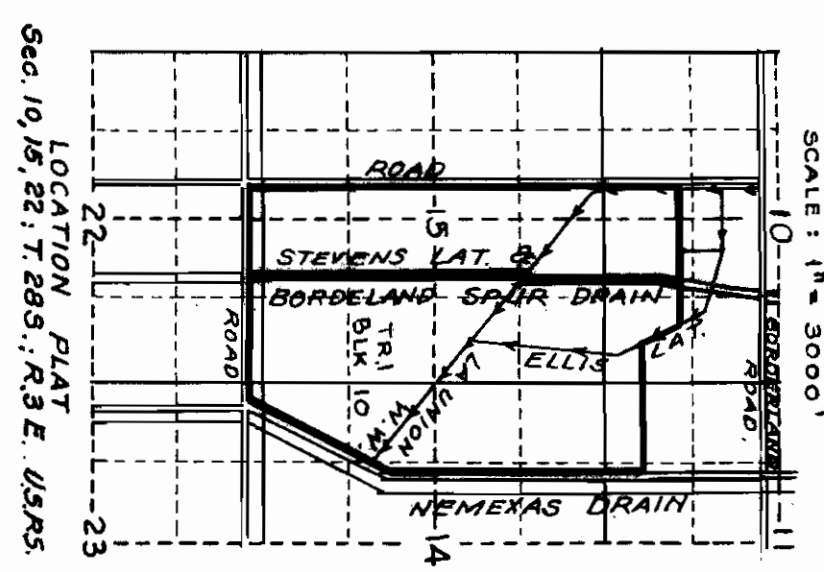


Total Area 20.70 Ac.
 LA UNION W.W. 0.30 Ac.
 STEVENS LAT 3.70 "
 Area occupied by Drain 4.00 "
 16.70 Ac.

BLOCK 10 - TRACT 1
UPPER VALLEY



Total Area 20.70 Ac.
 LA UNION W.W. 0.30 Ac.
 STEVENS LAT. 3.70 "
 Area occupied by Drain 4.00 "
16.70 Ac.



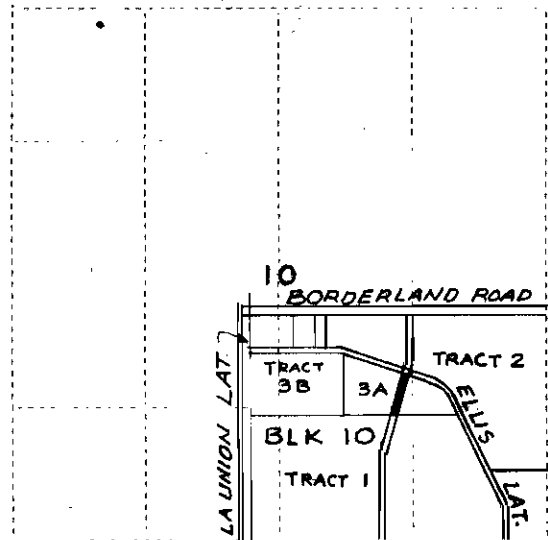
SCALE: 1" = 3000'

SCALE 1" = 200'

DEPARTMENT OF THE INTERIOR
 BUREAU OF RECLAMATION
 RIO GRANDE DIVISION
 STEVENS LATERAL
 BORDERLAND SPUR DRAIN

FIELD BOOK 7 OF 11
 CHECKED BY AWH
 DATE OF WAY 1/25/55

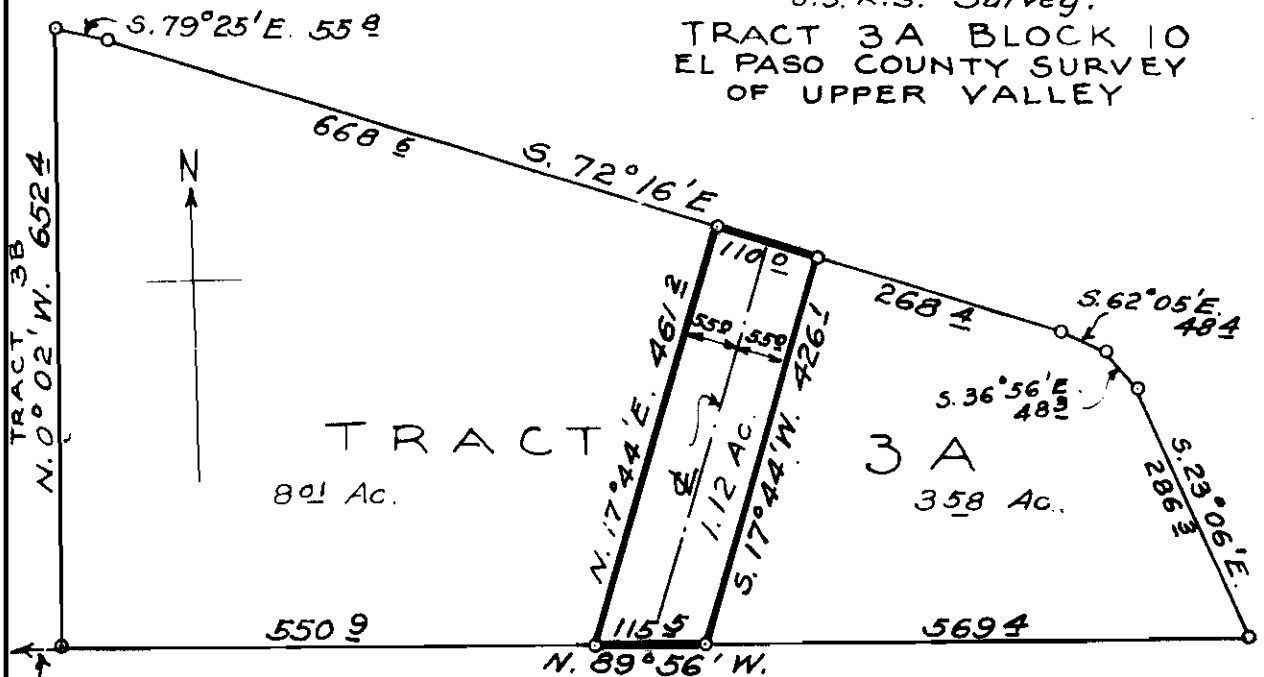
SCALE: 1" = 2000'



LOCATION PLAT

S. 10 .. T. 28 S. .. R. 3 E. ..
U.S. R. S. Survey.

TRACT 3A BLOCK 10
EL PASO COUNTY SURVEY
OF UPPER VALLEY



TRACT
3A
80 1/2 Ac.
358 Ac.

N. 89° 56' W. 10084
to S.W. Cor. Tract 3B

DRAIN R. of W.
Area = 1.12 Ac.

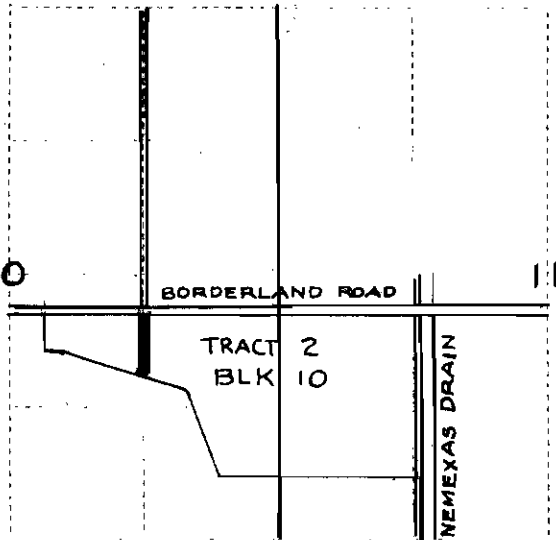
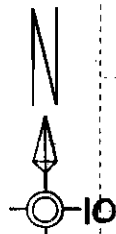
SCALE: 1" = 200'

DEPARTMENT OF THE INTERIOR,
UNITED STATES RECLAMATION SERVICE.
RIO GRANDE PROJECT- NEW MEXICO- TEXAS
BORDERLAND SPUR DRAIN

RIGHT OF WAY

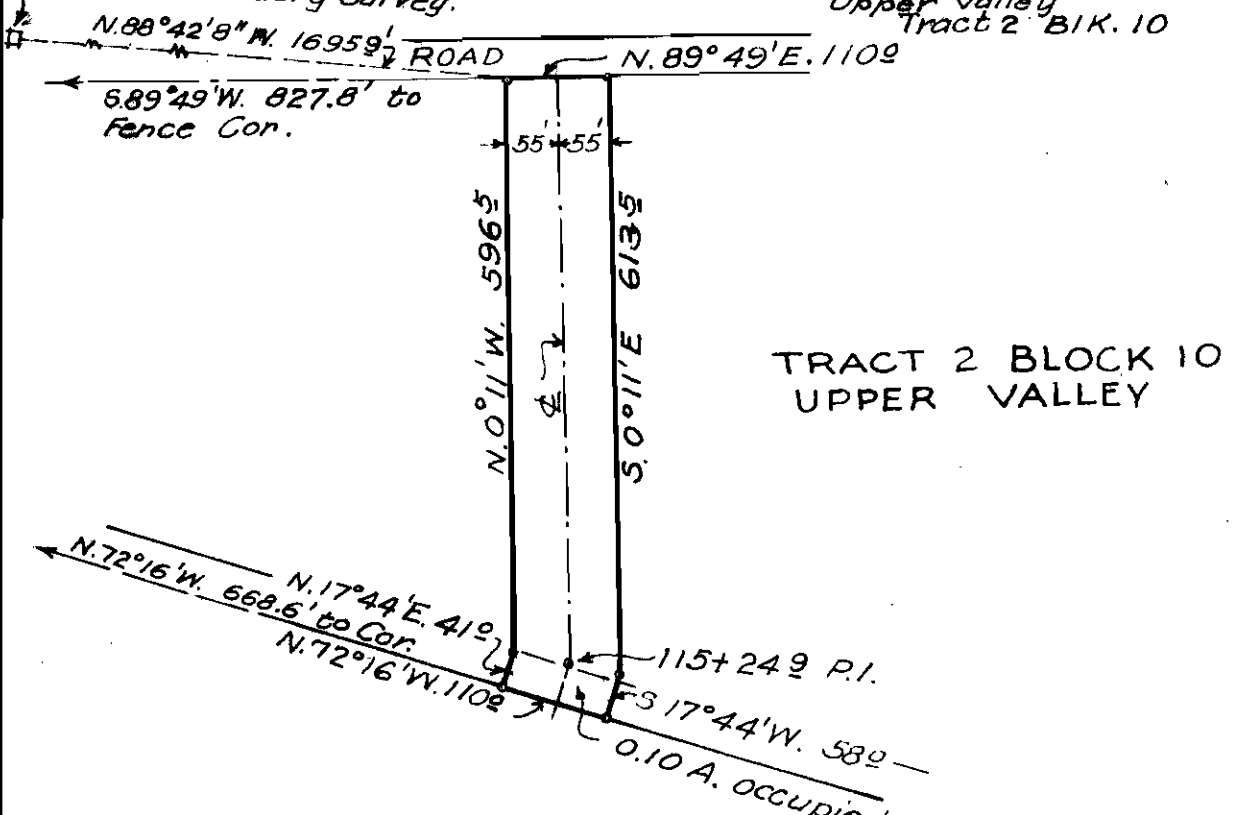
FIELD WORK: CHECKED: G.W.H.
DRAWN: G.A. APPROVED:

SCALE: 1" = 2000'



U.S. Reference Mon. # 35
Tex-N.M. Boundary Survey.

LOCATION PLAT
S 10 T 285 R. 3E U.S.R.S.
El Paso County Survey of
Upper Valley
Tract 2 BIK. 10



TRACT 2 BLOCK 10
UPPER VALLEY

Total Area ----- 1.65 Ac.
Occupied by Ellis Lab. --- 10 ---
Area for Drain ----- 1.55 Ac.

SCALE: 1" = 200'

DEPARTMENT OF THE INTERIOR.
UNITED STATES RECLAMATION SERVICE.
RIO GRANDE PROJECT- NEW MEXICO-TEXAS

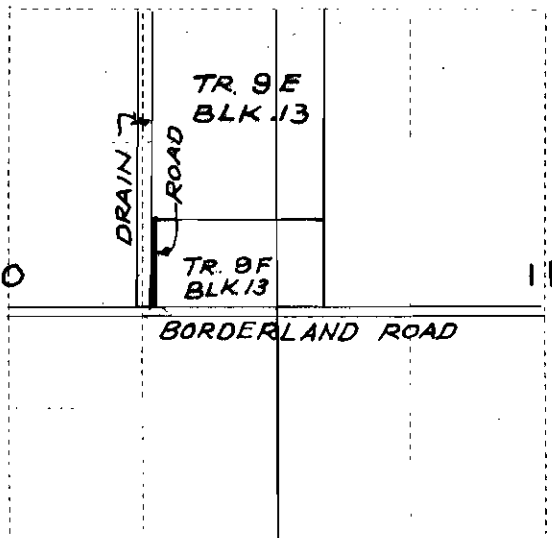
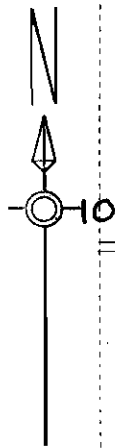
BORDERLAND SPUR DRAIN

RIGHT OF WAY

FIELD WORK: J.B.E. CHECKED: G.W.H.
DRAWN: G.A. APPROVED: _____

7 3664 L18 EL PASO, TEX., 12-6-32

SCALE: 1" = 2000'



LOCATION PLAT
S. 10 T. 28S. R. 3E. USRS
Tr. 9F BLK. 13
EL PASO COUNTY SURVEY
UPPER VALLEY

S. 89°54'E. 200'
S. 89°54'E. 1618.8' to Cor.

W. Boundary of Tract 9F
DRAIN R. of W. Line
BORDERLAND SPUR DRAIN

N. 0°11'W. 885.9'
S. 0°11'E. 885.9'

TRACT 9F BLK. 13

Area = 0.41 Ac

550'
200'

N. 89°49'E. 1634' to Cor.

BORDERLAND ROAD

S. 89°49'W. 200'

SCALE: 1" = 200'

DEPARTMENT OF THE INTERIOR.
UNITED STATES RECLAMATION SERVICE.
RIO GRANDE PROJECT - NEW MEXICO - TEXAS
ROADWAY FOR ENTRANCE
FROM BORDERLAND ROAD TO TR. 9E.
RIGHT OF WAY

FIELD WORK: J.B.E. CHECKED: G.V.H.

DRAWN: G.A. APPROVED:

8

3664 L/B EL PASO, TEX. 12-8-32

S. 89° 58' W. 15862 to Pipe, N.W. Cor. Tract 9A. 350 35° N. 89° 58' E. 13812 to Pipe, N.E. Cor. Tract 9E.

N. 89° 27' W. 16062 to S.W. Cor. Tract 9A & N.W. Cor. Tract 9B. 350 35° S. 89° 27' E. 350

S. 89° 59' W. 16334 to S.W. Cor. Tract 9B and N.W. Cor. Tract 9C. 350 35° N. 89° 59' E. 350

N. 89° 54' W. 16592 to S.W. Cor. Tract 9C and N.W. Cor. Tract 9D. 350 35° S. 89° 54' E. 350

S. 89° 49' W. 10324 to Pipe S.W. Cor. Tract 9D 350 35° N. 89° 49' E. 16542 to Pipe, S.E. Cor. Tract 9F.

Area - R. of W. 0.58 Ac.

Area - R. of W. 0.72 Ac.

Area - R. of W. 0.70 Ac.

Area - R. of W. 0.71 Ac.

Area of R. of W. = 2.00 Ac.

BORDERLAND SPUR DRAIN

Area - R. of W. 0.71 Ac.

200' ROAD. See Plat # 8

S. 0° 11' E. 7168

S. 0° 11' E. 24902

S. 0° 11' E. 8781

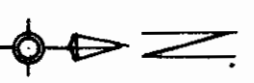
S. 0° 11' E. 8881

N. 0° 11' W. 7164

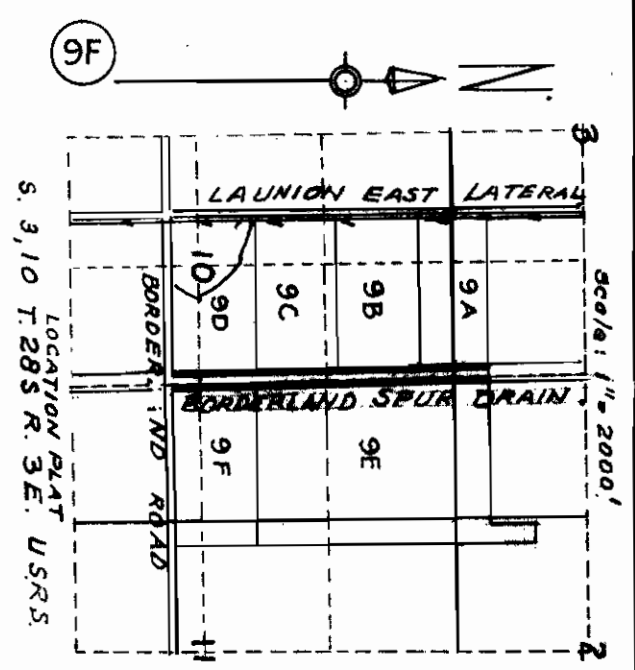
N. 0° 11' W. 24892

N. 0° 11' W. 8769

N. 0° 11' W. 8862



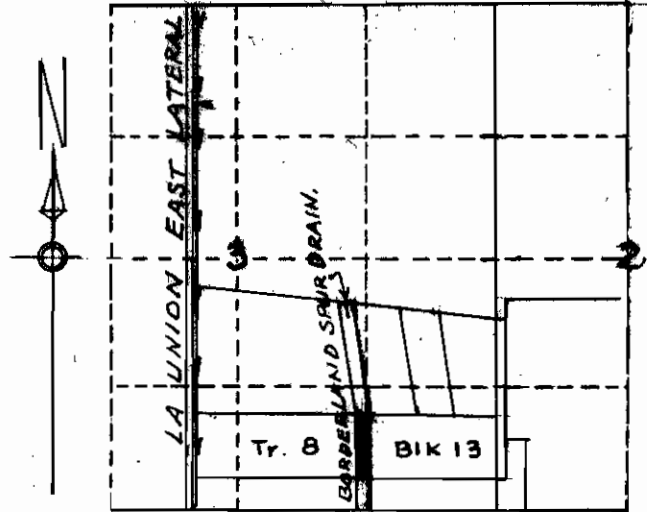
BLOCK 13
UPPER VALLEY



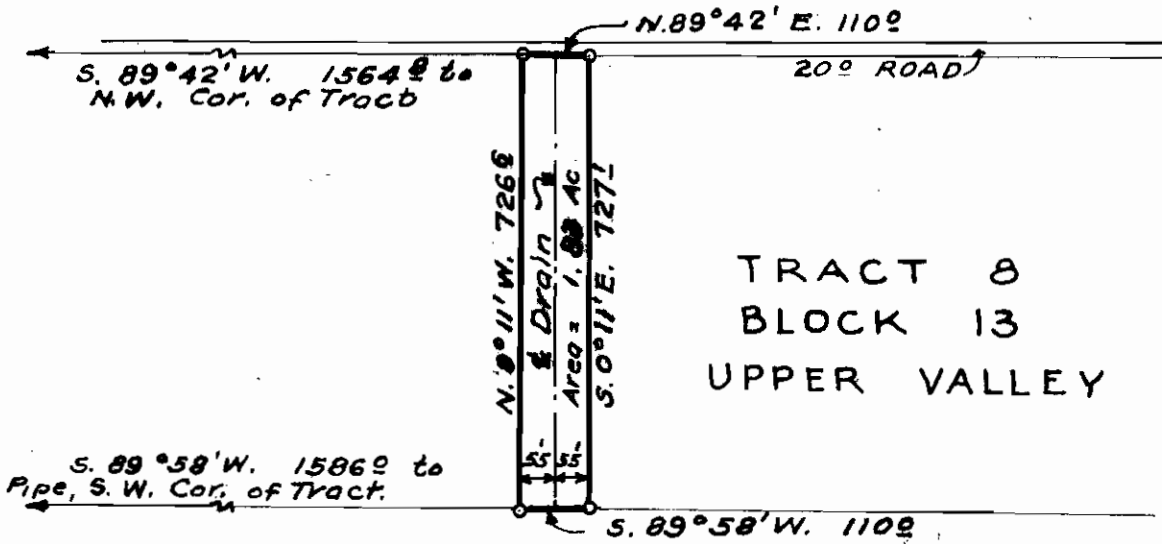
DEPARTMENT OF THE INTERIOR
BUREAU OF RECLAMATION
RIO GRANDE PROJECT--NEW MEXICO--TEXAS
BORDERLAND SPUR DRAIN
RIGHT OF WAY

SCALE 1" = 300'
FIELD WORK J.B.E. CHECKED G.W.H.
DRAWN G.A. APPROVED
3654-L-18 EL PASO, TEX. 3-16-33

SCALE: 1" = 2000'



LOCATION PLAT
 S. 3, T. 28 S., R. 3 E. USRS
 Tract 8, BIK 13 SURVEY
 UPPER VALLEY by
 EL PASO COUNTY.



TRACT 8
 BLOCK 13
 UPPER VALLEY

SCALE 1" = 300'

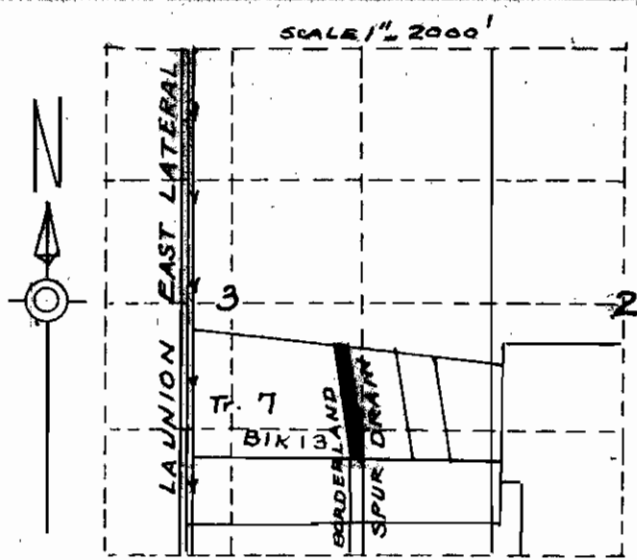
DEPARTMENT OF THE INTERIOR
 BUREAU OF RECLAMATION
 RIO GRANDE PROJECT-NEW MEXICO-TEXAS
BORDERLAND SPUR DRAIN

RIGHT OF WAY

FIELD WORK J.B.E. CHECKED C.W.H.
 DRAWN G.A. APPROVED

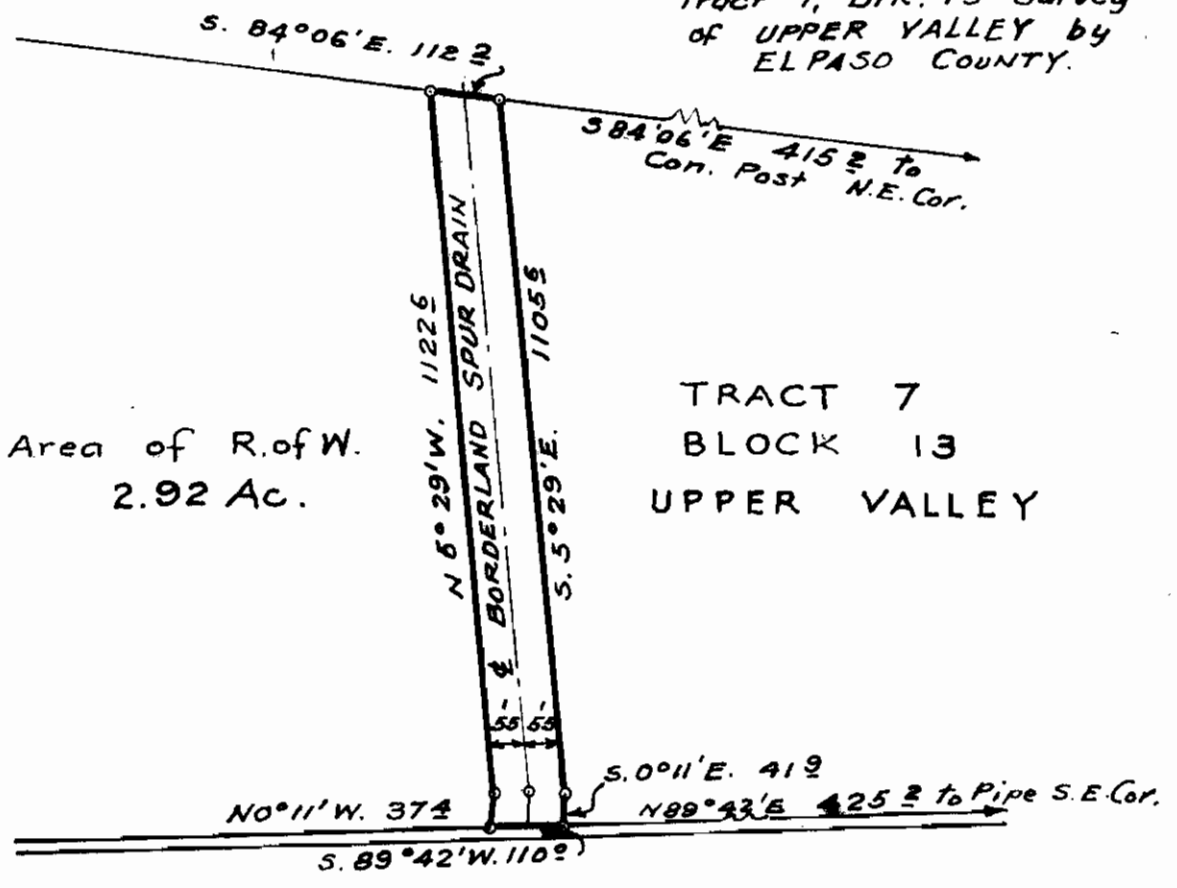
10

3664-1-18 EL PASO, TEX. 9-17-33



SCALE 1" = 2000'

LOCATION PLAT
S. 3, T. 28 S., R. 3 E USRS
Tract 7, BIK. 13 Survey
of UPPER VALLEY by
EL PASO COUNTY.



Area of R.of W.
2.92 Ac.

TRACT 7
BLOCK 13
UPPER VALLEY

SCALE 1" = 300'

DEPARTMENT OF THE INTERIOR
BUREAU OF RECLAMATION
RIO GRANDE PROJECT-NEW MEXICO-TEXAS

BORDERLAND SPUR DRAIN
RIGHT OF WAY

FIELD WORK J.B.E. CHECKED G.V.H.
DRAWN GA. APPROVED _____

11 3664-L-18 EL PASO, TEX. 3-18-33